

HIGH BAY **WAREHOUSE WITH OFFICE SPACE**

# 60 BORDER STREET

East Boston, Massachusetts

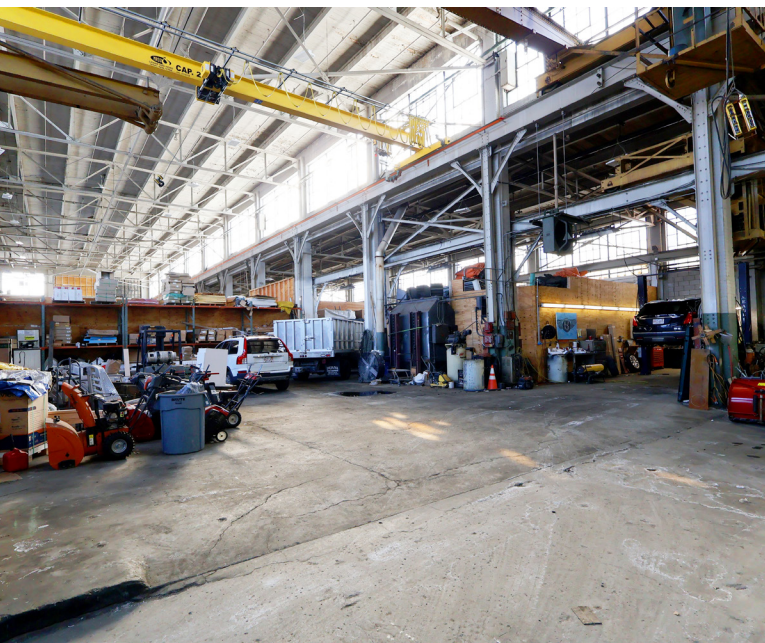
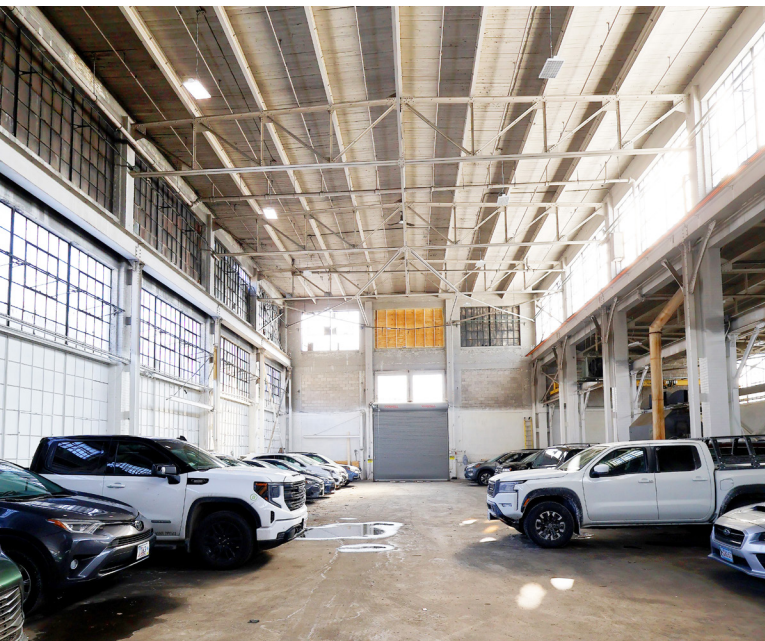
FOR LEASE

**39,535 SF Available**



# 60 BORDER STREET

East Boston, Massachusetts

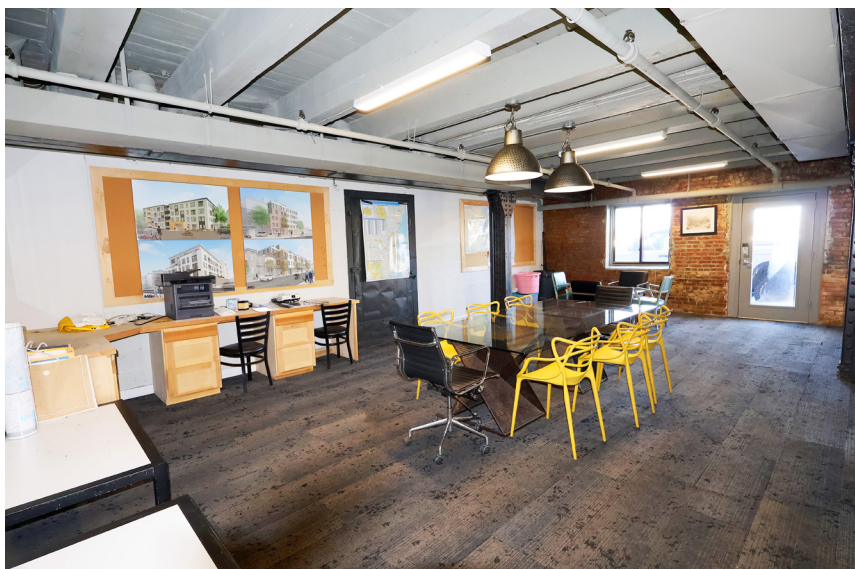


## PROPERTY SPECIFICATIONS

<b>AVAILABLE SF:</b>	39,535 SF
<b>PROPERTY TYPE:</b>	Warehouse with Office Space
<b>STORIES</b>	Two (2) with Mezzanine
<b>LAND:</b>	1.2 Acre Lot
<b>YEAR BUILT:</b>	1920
<b>ZONING:</b>	<ul style="list-style-type: none"><li>- WMU - Waterfront Mixed Use</li><li>- Coastal Floor Reilience Overlay District</li><li>- Interim Planning Overlay District</li><li>- PDA - Allowed</li></ul>
<b>PARKING:</b>	0.58/1,000 SF

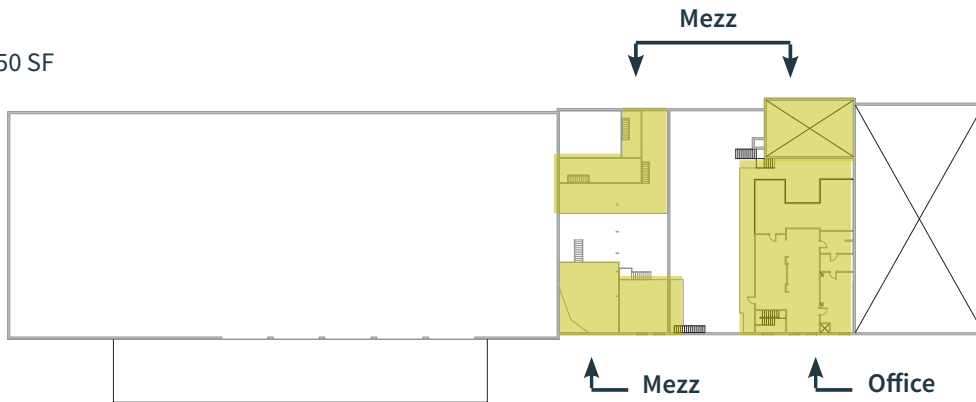
## BUILDING SPECIFICATIONS

<b>LOADING:</b>	Five (5) Drive-in Doors
<b>CLEAR HEIGHT:</b>	High Bay Warehouse: 32' Warehouse: 20'7" Office: 9'2"
<b>POWER:</b>	600 amps, 3-phase
<b>UTILITIES:</b>	<i>Gas: National Grid</i> <i>Electric: Eversource</i> <i>Water/Sewer: East Boston Water &amp; Sewer</i>
<b>SIGNAGE:</b>	Available
<b>AMENITIES:</b>	Conference Facility

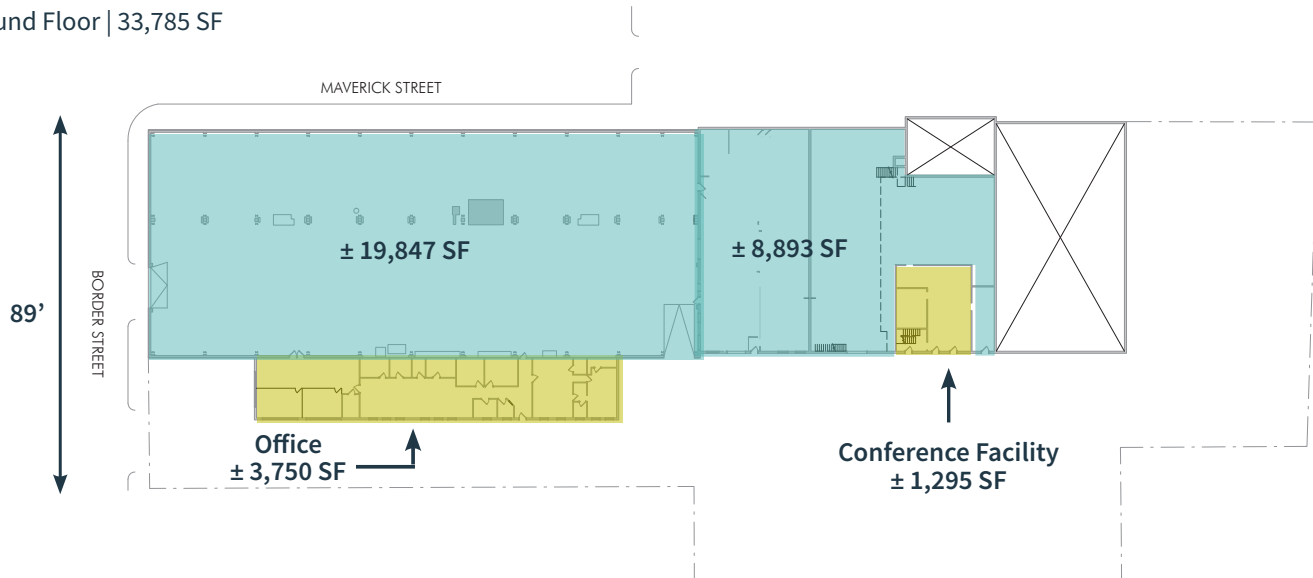


## Floor Plan

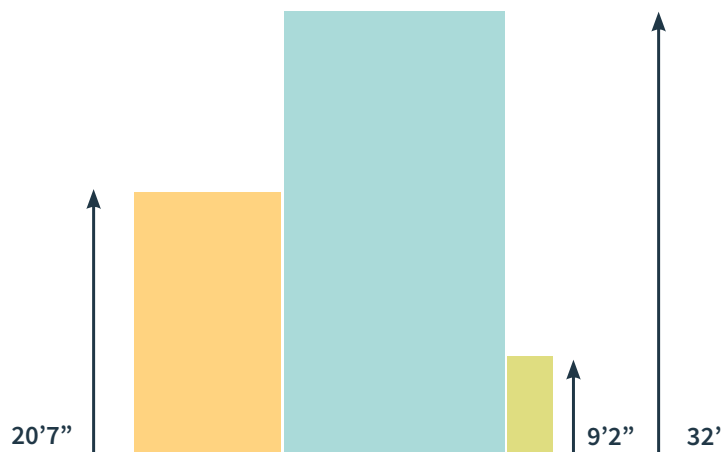
Upper Floor | 5,750 SF



Ground Floor | 33,785 SF



## Height Diagram



WAREHOUSE SPACE FOR LEASE

# 60 BORDER STREET

East Boston, Massachusetts



## CONTACT US TO ARRANGE A TOUR

### TREY AGNEW

Executive Vice President

617.549.5149 (call or text)

tagnew@hunnemanre.com

### PATRICK GRADY

Senior Vice President

781.820.9881

pgrady@hunnemanre.com

### MICHAEL ALLEN

Senior Vice President

781.325.2676

mallen@hunnemanre.com



303 Congress Street, Boston, MA 02210 617.457.3400 [www.hunnemanre.com](http://www.hunnemanre.com)

©2025 Hunneman. All rights reserved. All information has been obtained from sources believed reliable but no warranty or representation is verified for accuracy or completeness. Caution and independent investigation of property and information should be verified. Reliance on this information is at your own risk.