

# Executive suites for lease



40 CALHOUN STREET | CHARLESTON, SC

**Ashley Jackrel, SIOR, CCIM**

Senior Vice President

+1 843 327 0124

[ashley.jackrel@avisonyoung.com](mailto:ashley.jackrel@avisonyoung.com)

**Kaitlyn Bridges**

Associate

+1 843 203 2785

[kaitlyn.bridges@avisonyoung.com](mailto:kaitlyn.bridges@avisonyoung.com)

**AVISON  
YOUNG**









# An elevated office setting

The Executive Suites at Charleston Gateway Campus offer an exclusive selection of leasable private offices in a professional setting with marble-lined lobby, multiple conference spaces, gracious ceiling height, beveled glass office enclosures and rich wood trim. These offices are suitable for professional leaders, innovators and entrepreneurs seeking an elevated work environment. Fellow tenants include attorneys, financial advisors, insurance agents, accountants, and wealth managers.

Located at the intersection of Calhoun and East Bay streets, the campus is a walkable complex occupied by office and service related businesses. The newest restaurant addition is Marbled & Fin, easily accessible to guests off of Washington Street and with convenient parking on site, on street, and in the aquarium garage. Within close proximity and comfortable walking distance are Beech Café, Ted's Butcher Block, Shiki and East Bay Deli. A back-up generator allows for uninterrupted service in the event of a power outage. The Ravenel Bridge and I-26 are both conveniently accessible.

## AVAILABILITIES

Suite	Square Footage	Asking monthly rate	Date Available
A	1,419	Leased	Leased
B	581	Leased	Leased
 C	314	\$1,100	Now
 D	439	Leased	Leased
 E	432	\$1,450	Now
 F	512	Leased	Now
G	424	Leased	Leased
H	427	\$1,395	Now
I	429	\$1,395	Now
J	393	\$1,200	Now
K	468	Leased	Leased
L	396	Leased	Leased
 N	2,442	Leased	Now

 Desk included



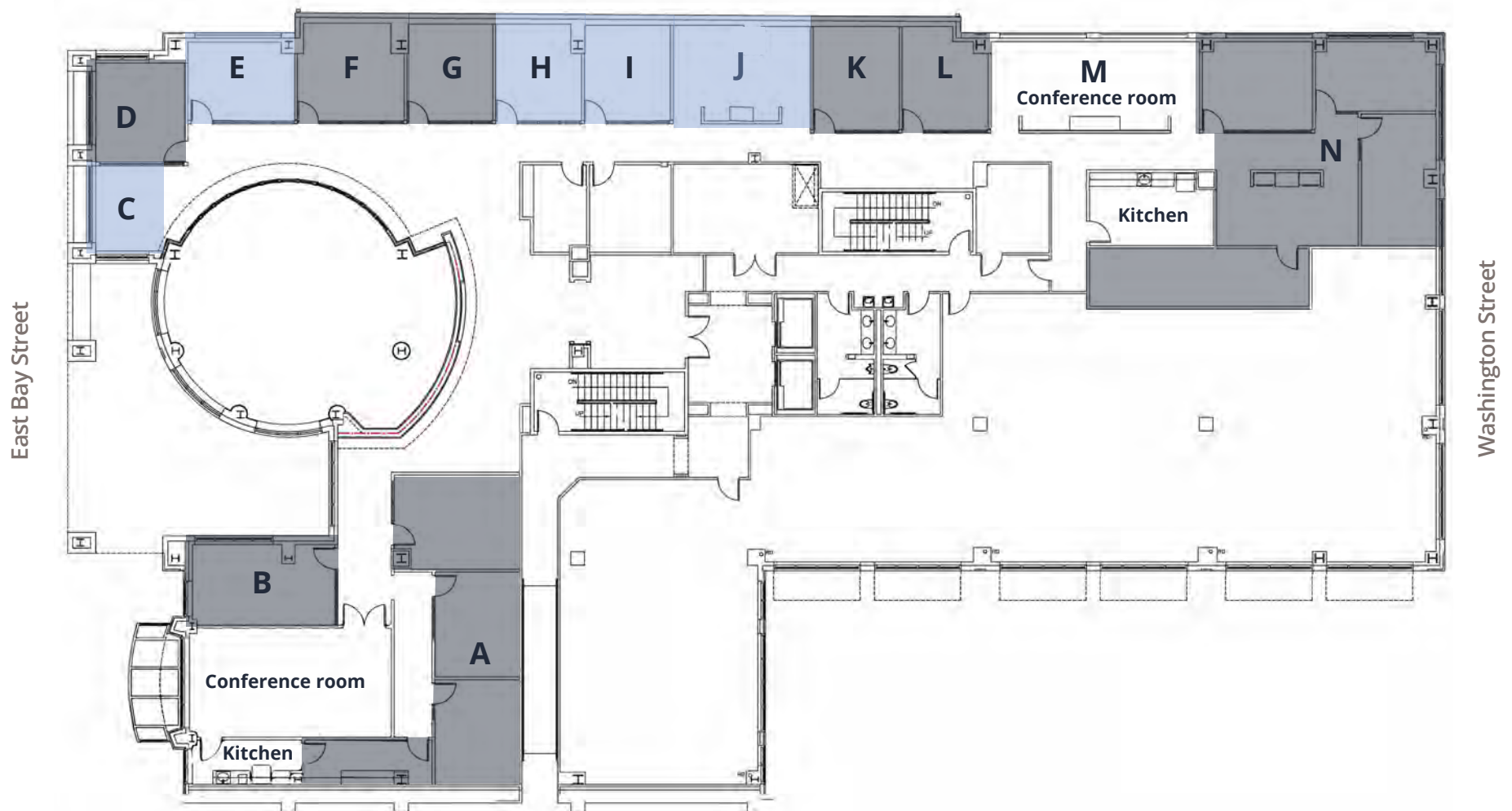
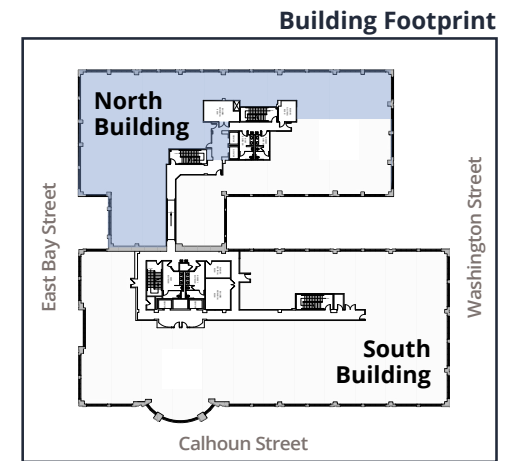
Click [here](#) to view our additional office availabilities at the Charleston Gateway Center

# Floorplan

SUITE 250 - NORTH

● Available

● Leased

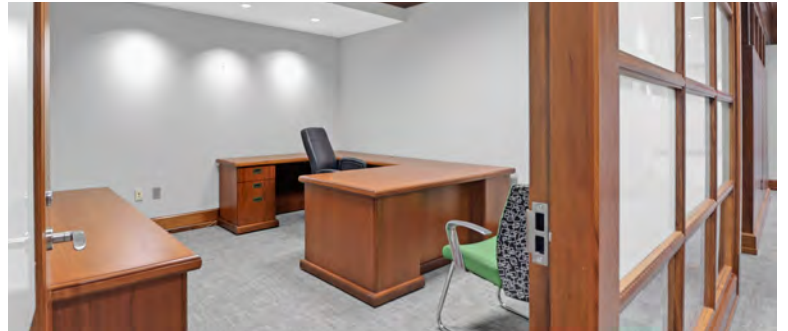




# Photos









# Location overview



12 miles from the  
Charleston  
International  
Airport



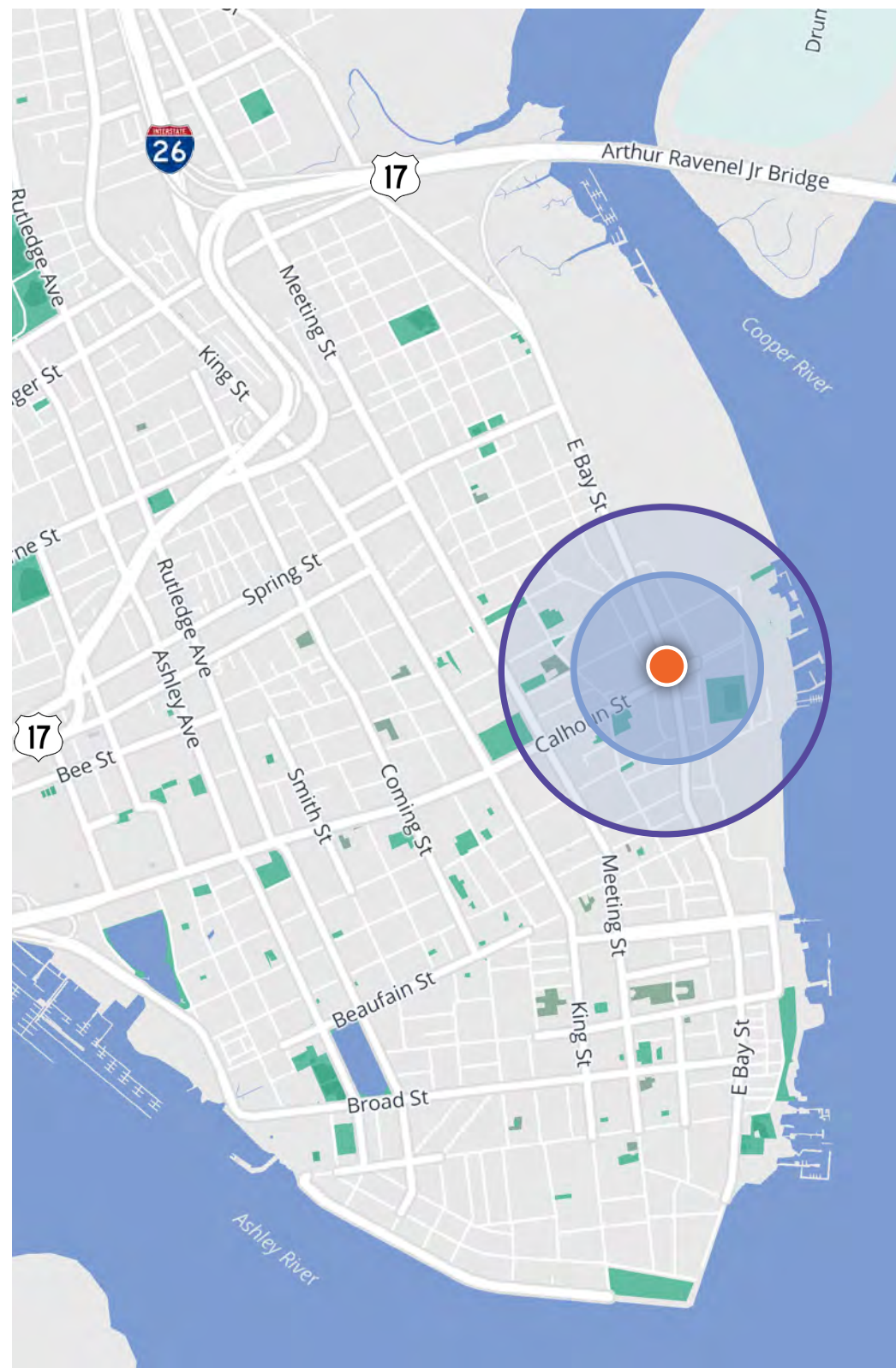
Near the Aquarium and  
the International African  
American Museum  
both providing cultural  
enhancement



Numerous daytime and  
evening amenities are a  
short walking distance



Located near  
six publicly  
accessible parks  
and a public library





Walk to restaurants,  
entertainment, &  
parking







For more information, contact:

**Ashley Jackrel, SIOR, CCIM**

Senior Vice President

+1 843 327 0124

[ashley.jackrel@avisonyoung.com](mailto:ashley.jackrel@avisonyoung.com)

**Kaitlyn Bridges**

Associate

+1 843 203 2785

[kaitlyn.bridges@avisonyoung.com](mailto:kaitlyn.bridges@avisonyoung.com)