

135 WEST CHELTEN AVENUE

Philadelphia, PA 19144



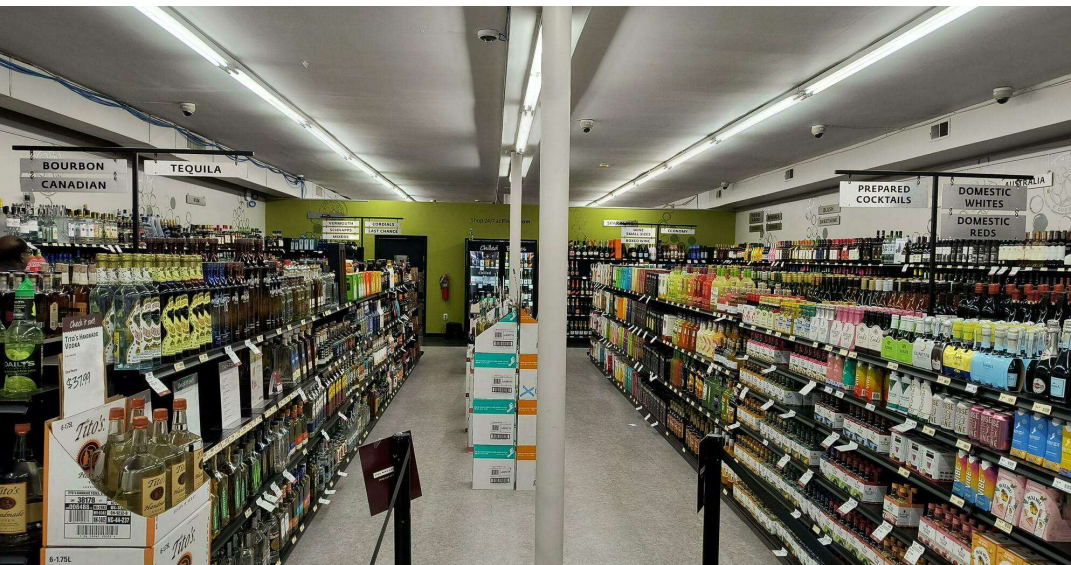
INVESTMENT OPPORTUNITY



RETAIL BUILDING FOR SALE



3,840 SF



PROPERTY DESCRIPTION

- NEWLY RENOVATED - new flooring, paint, hot water heater, new double doors installed in rear for deliveries
- Newly extended lease with long standing tenant (PLCB)
- Reliable monthly payments
- Located in densely populated retail area
- Real Estate Taxes: \$3,956 (2023)
- Under 2 miles to Route 1
- 3.2 miles to I-76 Exit 339
- 8.5 miles to Center City

SALE PRICE:
\$649,000

FOR MORE INFORMATION

Rick Gordon

📞 215.801.8491

✉️ rick.gordon@naimertz.com

NAI MERTZ DISCLAIMER: NO WARRANTY OR REPRESENTATION, EXPRESS OR IMPLIED, IS MADE AS TO THE ACCURACY OF THE INFORMATION CONTAINED HEREIN, AND THE SAME IS SUBMITTED SUBJECT TO ERRORS, OMISSIONS, CHANGE OF PRICE, RENTAL OR OTHER CONDITIONS, PRIOR SALE, LEASE OR FINANCING, OR WITHDRAWAL WITHOUT NOTICE, AND OF ANY SPECIAL LISTING CONDITIONS IMPOSED BY OUR PRINCIPALS. NO WARRANTIES OR REPRESENTATIONS ARE MADE AS TO THE CONDITION OF THE PROPERTY OR ANY HAZARDS CONTAINED THEREIN ARE ANY TO BE IMPLIED. OUTLINES ARE APPROXIMATE AND SHOWN ONLY TO IDENTIFY THE PARCEL IN CONSIDERATION.

NAI Mertz



NAI Mertz | 210 E. Street Road, Suite 3B

Feasterville-Trevose, PA 19053

215-396-2900 | naimertz.com



135 WEST CHELTEN AVENUE

Philadelphia, PA 19144



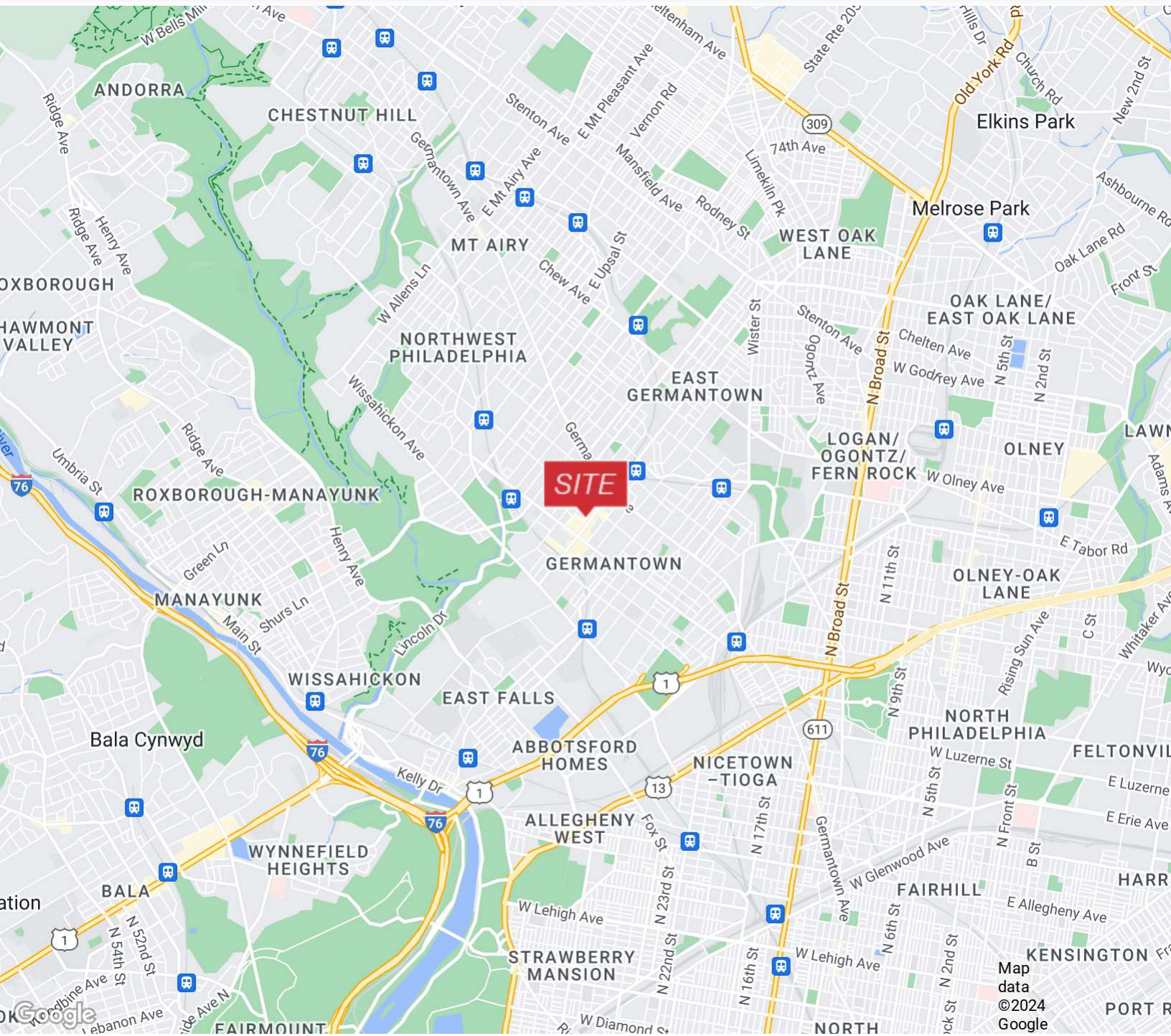
INVESTMENT OPPORTUNITY



RETAIL BUILDING FOR SALE



3,840 SF



FOR MORE INFORMATION

Rick Gordon

215.801.8491

rick.gordon@naimertz.com

NAI MERTZ DISCLAIMER: NO WARRANTY OR REPRESENTATION, EXPRESS OR IMPLIED, IS MADE AS TO THE ACCURACY OF THE INFORMATION CONTAINED HEREIN, AND THE SAME IS SUBMITTED SUBJECT TO ERRORS, OMISSIONS, CHANGE OF PRICE, RENTAL OR OTHER CONDITIONS, PRIOR SALE, LEASE OR FINANCING, OR WITHDRAWAL WITHOUT NOTICE, AND OF ANY SPECIAL LISTING CONDITIONS IMPOSED BY OUR PRINCIPALS. NO WARRANTIES OR REPRESENTATIONS ARE MADE AS TO THE CONDITION OF THE PROPERTY OR ANY HAZARDS CONTAINED THEREIN ARE ANY TO BE IMPLIED. OUTLINES ARE APPROXIMATE AND SHOWN ONLY TO IDENTIFY THE PARCEL IN CONSIDERATION.

NAI Mertz



NAI Mertz | 210 E. Street Road, Suite 3B

Feasterville-Trevose, PA 19053

215-396-2900 | naimertz.com

