

3400 Oakton, Skokie IL

Available For Lease: 25,000 – 67,700 SF

GREAT SKOKIE LOCATION

FOR LEASE: High-End Upgrades Available

BUILDING SIZE: 198,200 SF

AVAILABLE: 25,000 – 67,700 SF

CEILING HEIGHT: 17'

LOADING: 4 Docks; 2 Drive-In Doors

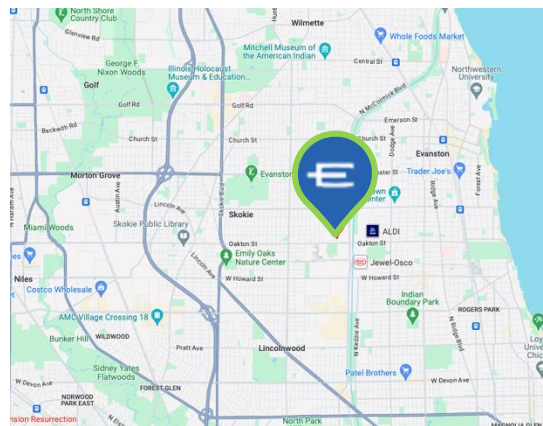
PARKING: Truck Parking Available

2022 REAL ESTATE TAXES: \$3.64 PSF (Paid in 2023)

2023 CAM: \$2.01 PSF

ASKING RATE: \$7.95 PSF Net

- High-end upgrades available
- High density parking may be available
- Great, hard to find Skokie location
- Truck parking available
- 18,000 Vehicles per day
- New office build-to-suit



ENTRE
Commercial Realty LLC

Denise Stein Chaimovitz, SIOR, MA

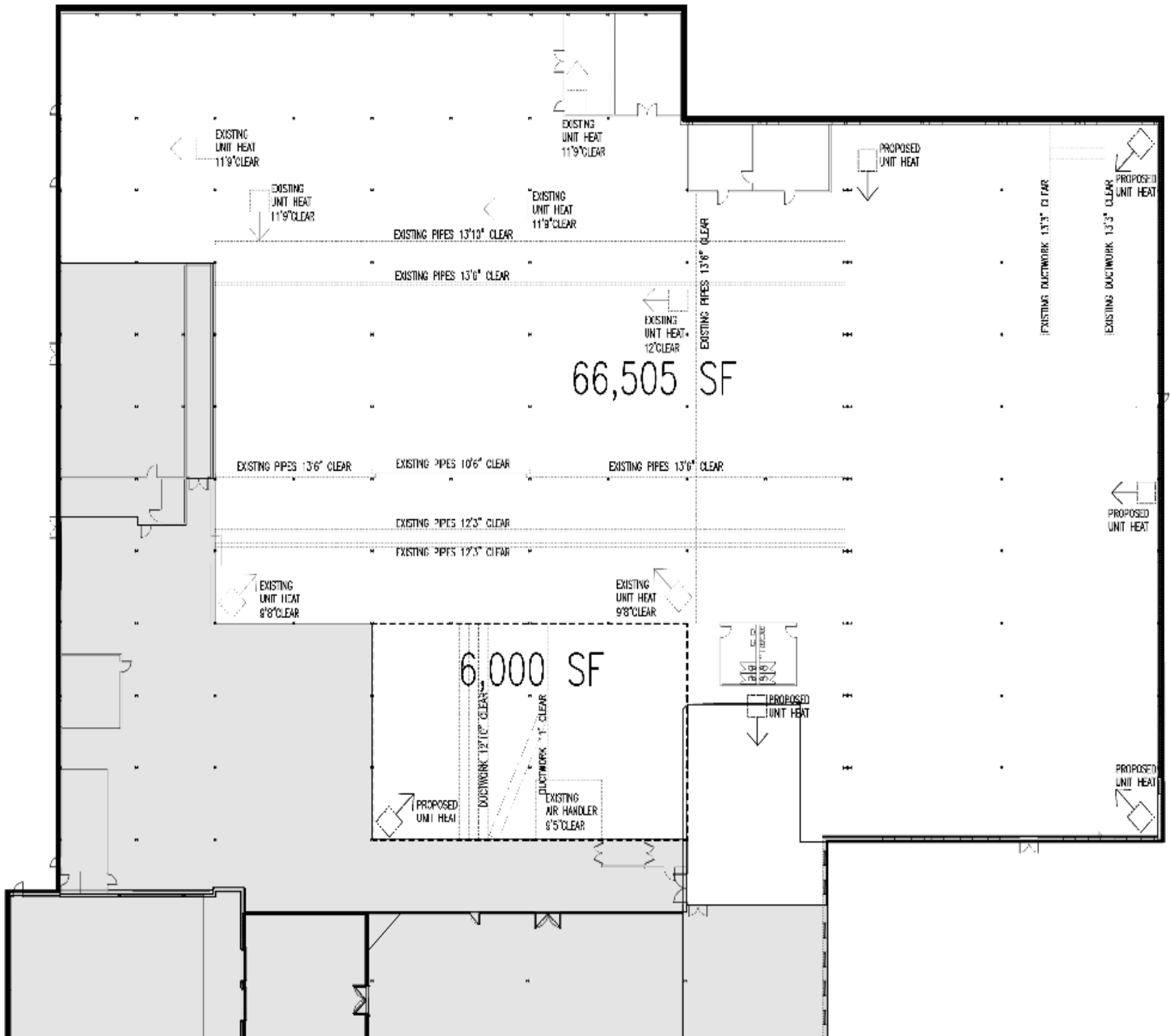
847-804-8566

Denise@entrecmercial.com

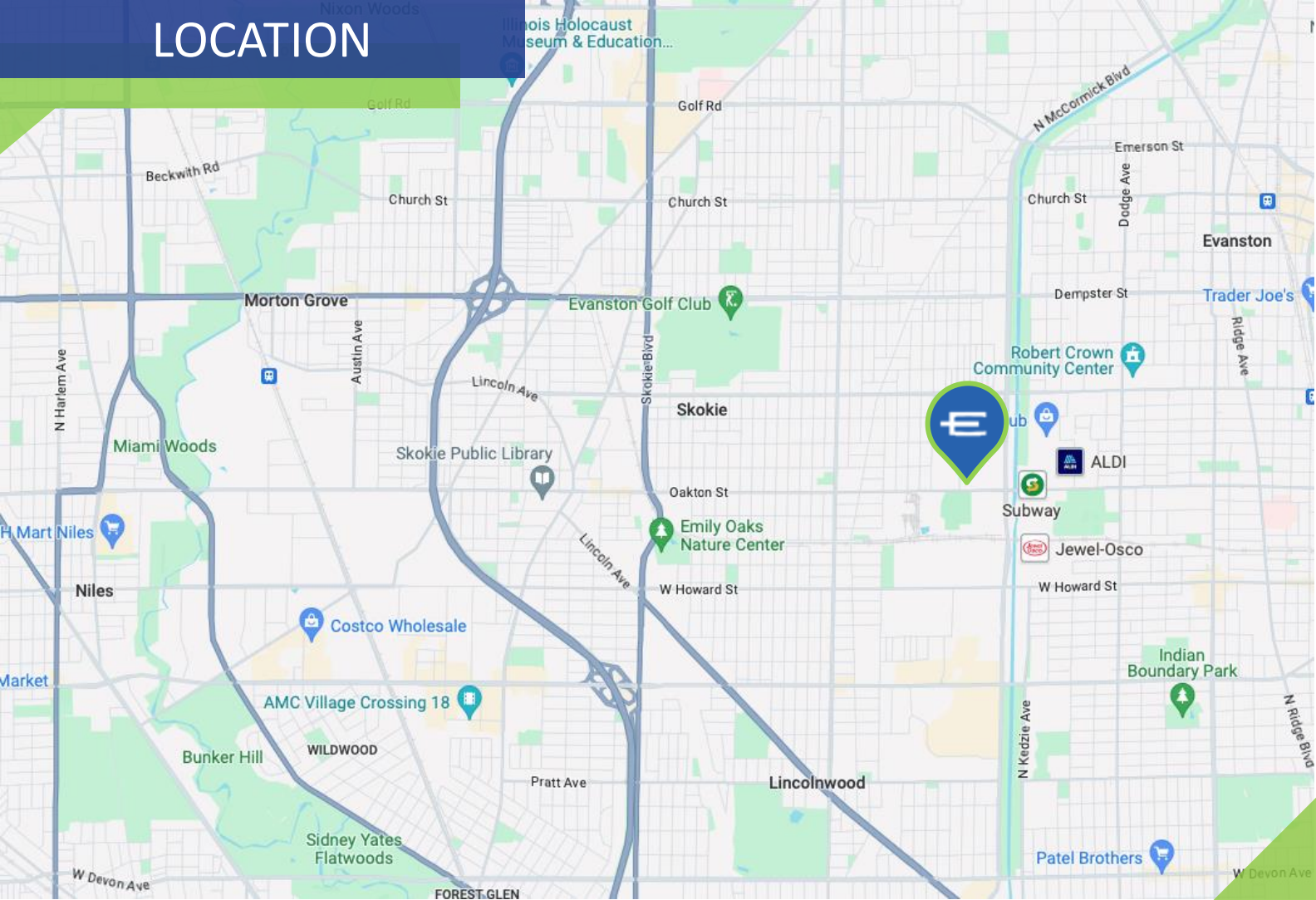
SCAN FOR LISTING



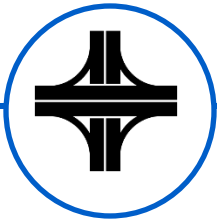
SPACE PLAN



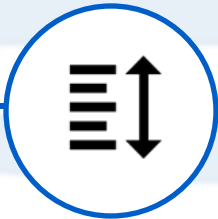
LOCATION



SCAN FOR MAP VIEW



**Great, Hard to Find
Skokie Location**



**New Office
BTS**



18,000 VPD

ENTRE
Commercial Realty LLC

Denise Stein Chaimovitz, SIOR, MA
847-804-8566
Denise@entrecmercial.com

PHOTOS

