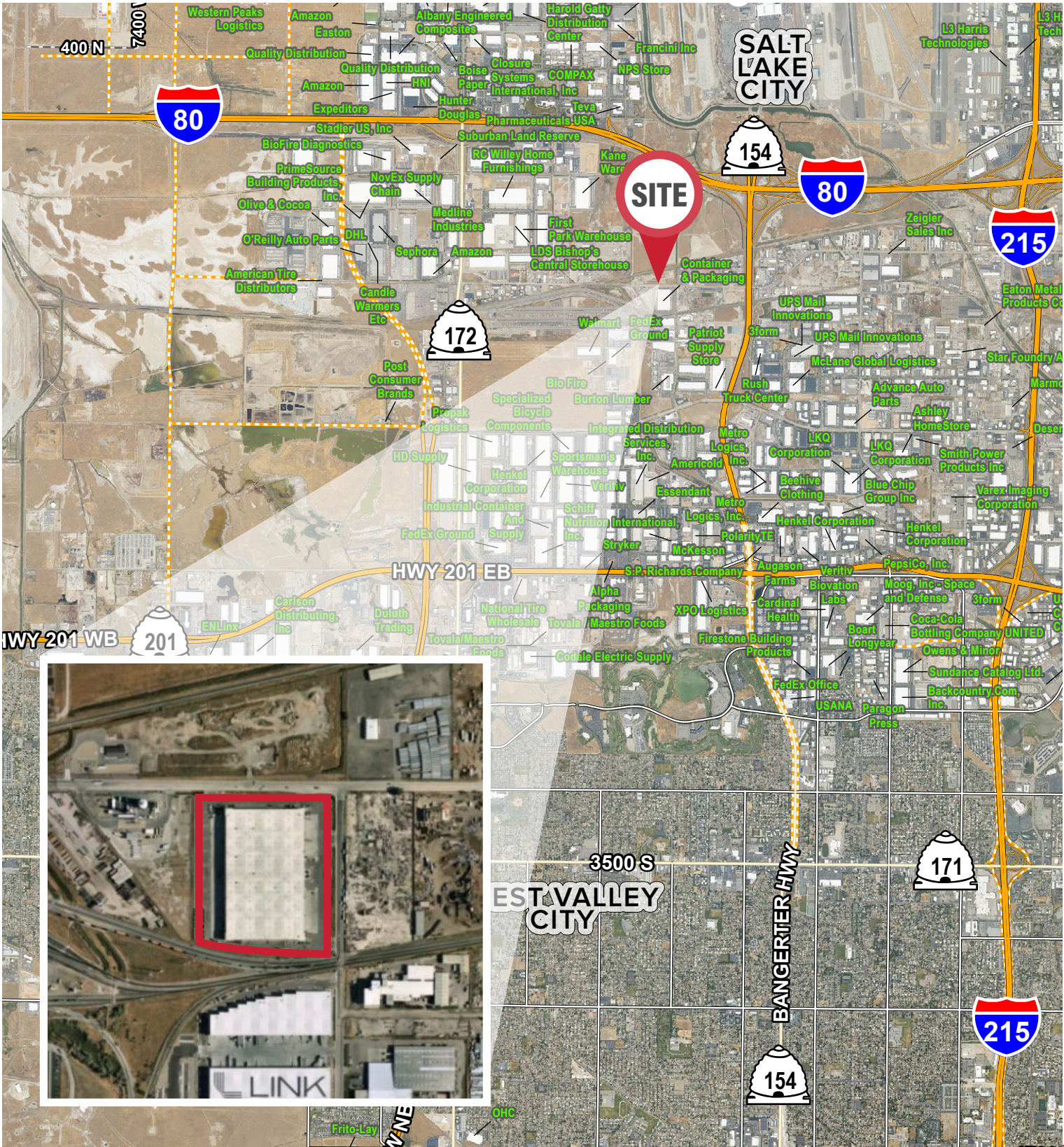


PACIFIC LANDING III

4475 West 700 South | Salt Lake City, UT 84104



PACIFIC LANDING III

4475 West 700 South | Salt Lake City, UT 84104



FOR SUBLEASE

\$0.44/Monthly NNN

Partial Existing Racking May be Included During Sublease Term

Property Highlights

- Available: 115,848 SF
- Office: 1,520 SF
- Warehouse: 114,328
- Loading:
 - Seventeen (17) Total Dock High Doors with Seals and bumpers
 - Ten (10) with Pit Levelers (2 Hydraulic), Seven (7) with Edge of Dock Levelers
- Three (3) Grade Level Doors: 12'x14'
- Clear Height: 32'
- Column Spacing: 52'x56'
- Truck Court Depth: 185'
- ESFR Fire Suppression System
- LED Motion Sensor Lighting
- Security System
- Skylights
- Gas Forced Heat in Warehouse
- Power: 900 Amps 480/277 V | 3-Phase | 4-Wire
- Concrete Tilt Construction
- Year Built: 2011
- Zoning: Salt Lake City Light Industrial (M-1)
- Convenient Access Off I-80 and Bangerter Highway
- Master Lease Expiration Date: February 28, 2026

Contact

SKYLER PETERSON, SIOR
Executive Vice President
m 801.656.7354
speterson@legendcommercial.com

TRE BOURDEAUX, SIOR
Vice President
m 801.824.0397
tbourdeaux@legendcommercial.com

PARKER TAGGART
Senior Associate
m 801.928.1815
ptaggart@legendcommercial.com



801.930.6750 | www.legendcommercial.com
2180 S 1300 E, Suite 240 | Salt Lake City, UT 84106

SKYLER PETERSON, SIOR
Executive Vice President
m 801.656.7354
speterson@legendcommercial.com

TRE BOURDEAUX, SIOR
Vice President
m 801.824.0397
tbourdeaux@legendcommercial.com

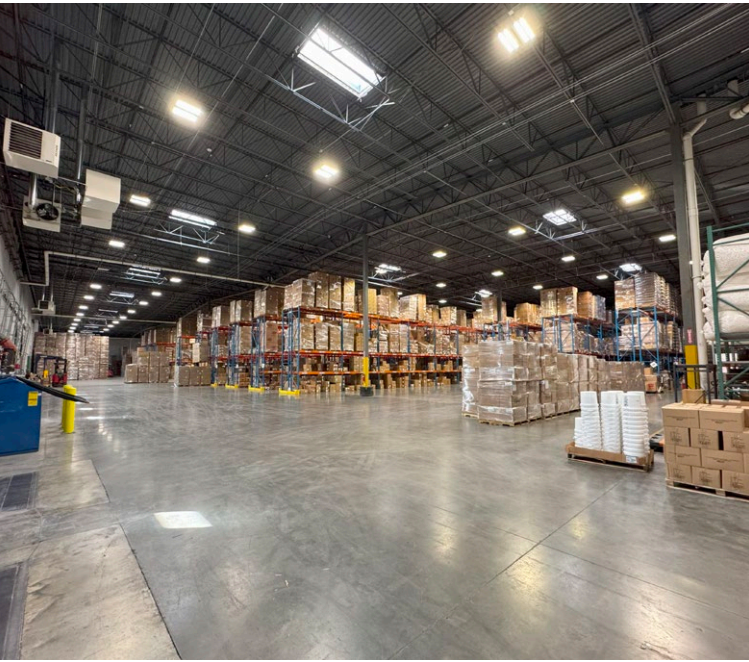
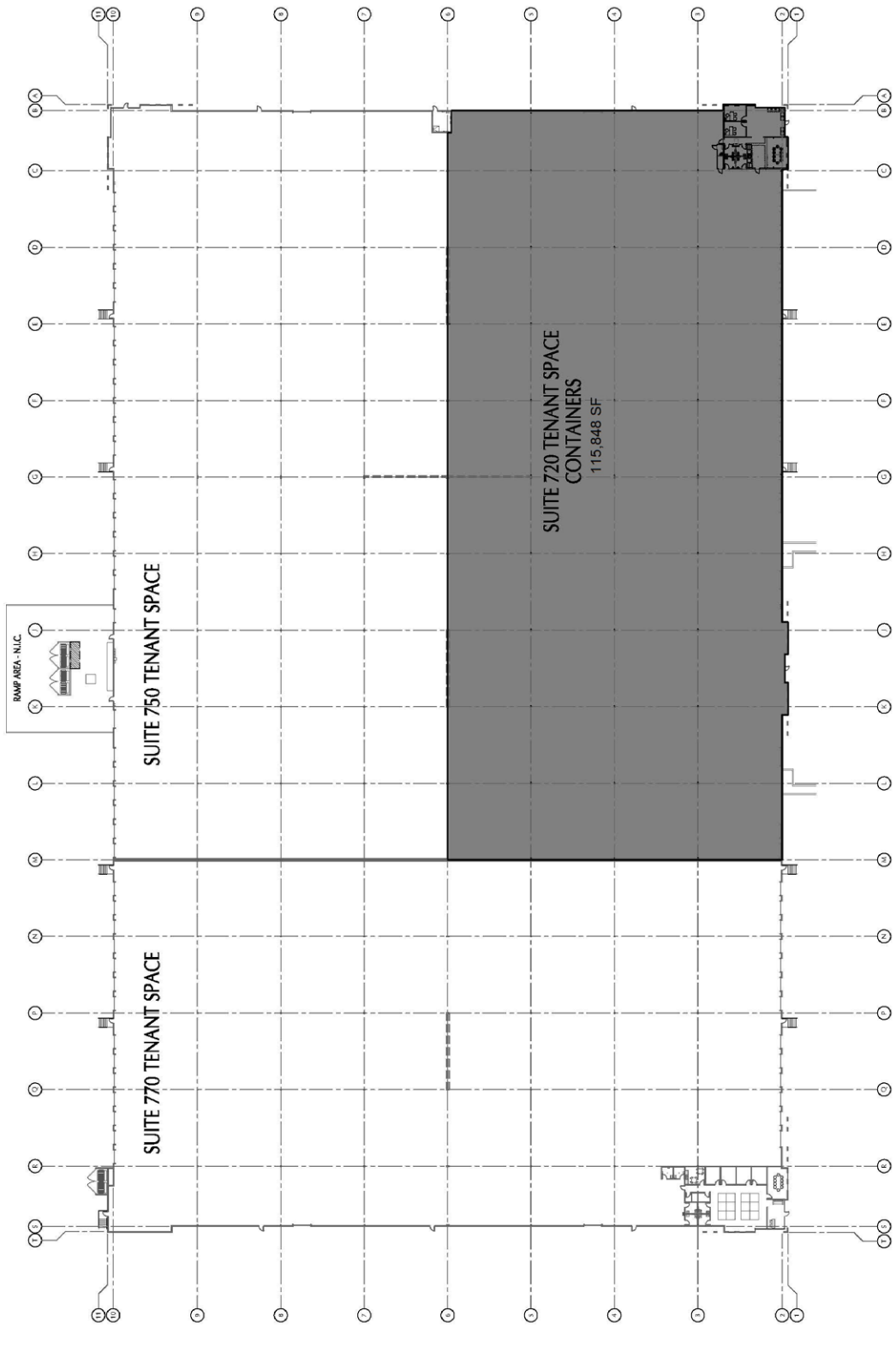
PARKER TAGGART
Senior Associate
m 801.928.1815
ptaggart@legendcommercial.com



801.930.6750 | www.legendcommercial.com
2180 S 1300 E, Suite 240 | Salt Lake City, UT 84106

PACIFIC LANDING III

4475 West 700 South | Salt Lake City, UT 84104



Contact

SKYLER PETERSON, SIOR
Executive Vice President
m 801.656.7354
speterson@legendcommercial.com

TRE BOURDEAUX, SIOR
Vice President
m 801.824.0397
tbourdeaux@legendcommercial.com

PARKER TAGGART
Senior Associate
m 801.928.1815
ptaggart@legendcommercial.com

801.930.6750 | www.legendcommercial.com
2180 S 1300 E, Suite 240 | Salt Lake City, UT 84106

Contact

SKYLER PETERSON, SIOR
Executive Vice President
m 801.656.7354
speterson@legendcommercial.com

TRE BOURDEAUX, SIOR
Vice President
m 801.824.0397
tbourdeaux@legendcommercial.com

PARKER TAGGART
Senior Associate
m 801.928.1815
ptaggart@legendcommercial.com

801.930.6750 | www.legendcommercial.com
2180 S 1300 E, Suite 240 | Salt Lake City, UT 84106