

Freeway Visible Parcel For Sale

SE Corner Citracado & Interstate 15
Escondido, CA

\$1,100,000

Potential for Office,
Medical, or Limited Retail



CITRACADO PARKWAY

CITRACADO MEDICAL PLAZA

- Possible Drive-thru
- Single Tenant or Multi Tenant Configurations Available
- Freeway Visible Drive-thru with Potential for Pylon Signage
- Upcoming Area with Many Surrounding Proposed Developments
- Immediate I-15 Access and Less than Three Miles from Highway 78

.89 Acre Parcel

For more information, please contact:

Nick Zech

858-232-2100

nzech@cdccommercial.com

CalBRE Lic. #01721457

Don Zech

858-486-9999

dzech@cdccommercial.com

CalBRE Lic. #00885909

Matt Orth

858-736-1337

morth@cdccommercial.com

CalBRE Lic. #01884500

11440 W. Bernardo Ct., #300
San Diego, CA 92127

T: 760-743-8500

www.cdccommercial.com

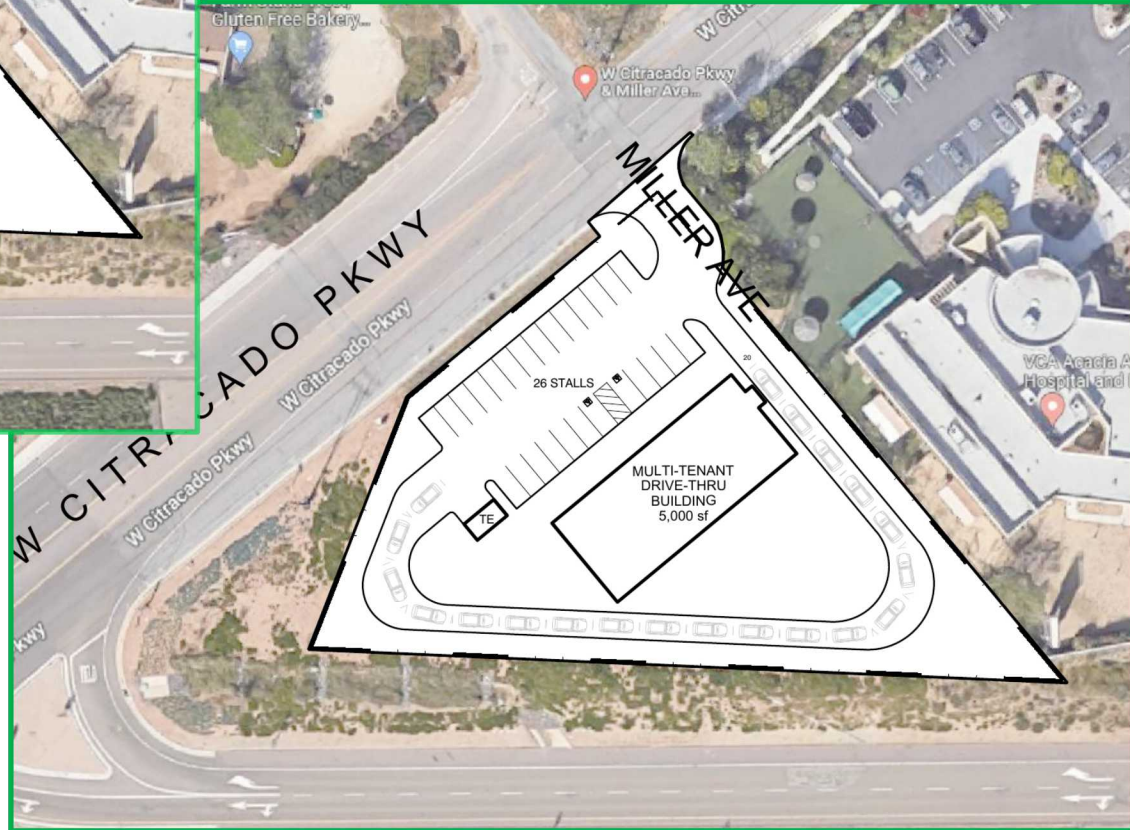
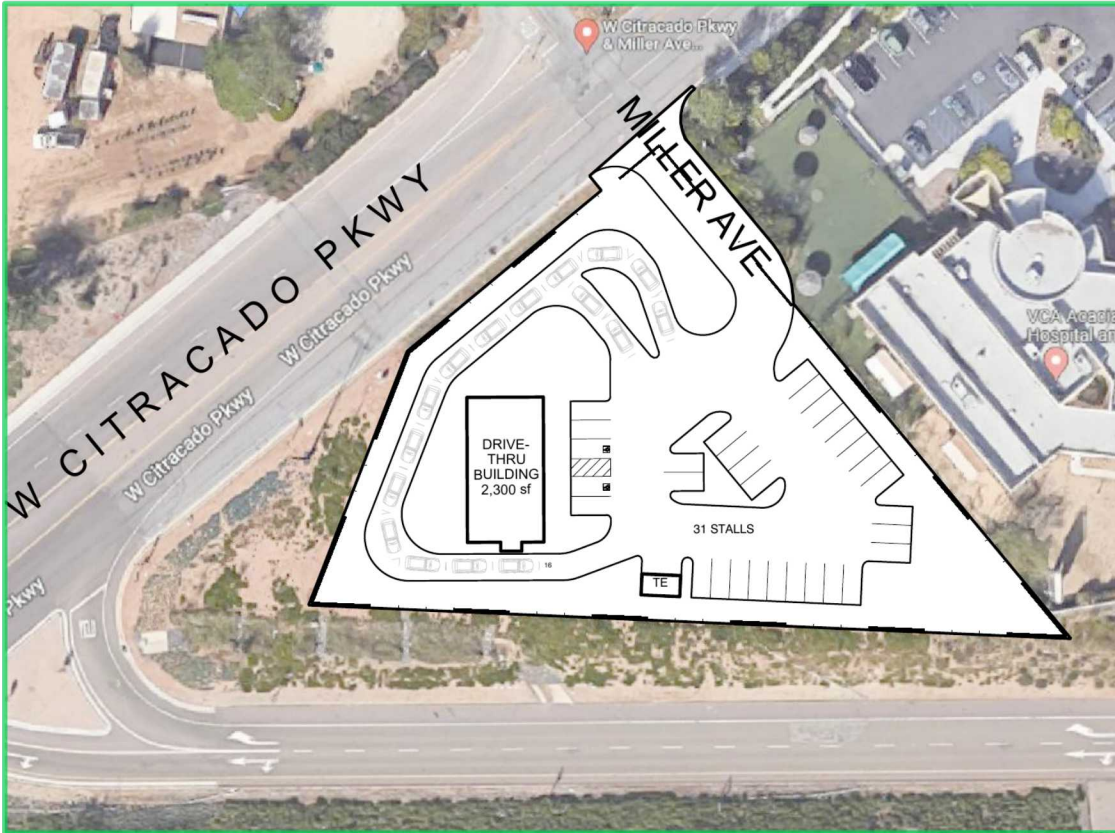


www.cdccommercial.com

CalBRE Lic. #01857155

Potential Layouts

Option 1:
Single-Tenant Drive-Thru Building
2,300 SF
31 Parking Stalls



Option 2:
Multi-Tenant Drive-Thru Building
5,000 SF
26 Parking Stalls

This information is compiled from data which we believe to be correct but no liability is assumed by this company as to accuracy of such data. V3

For more information, please contact:

Nick Zech
858-232-2100
nzech@cdccommercial.com
CalBRE Lic. #01721457

Don Zech
858-486-9999
dzech@cdccommercial.com
CalBRE Lic. #00885909

Matt Orth
858-736-1337
morth@cdccommercial.com
CalBRE Lic. #01884500

11440 W. Bernardo Ct., #300
San Diego, CA 92127
T: 760-743-8500
www.cdccommercial.com

Surrounding



This information is compiled from data which we believe to be correct but no liability is assumed by this company as to accuracy of such data. V3

For more information, please contact:

Nick Zech
858-232-2100
nzech@cdccommercial.com
CalBRE Lic. #01721457

Don Zech
858-486-9999
dzech@cdccommercial.com
CalBRE Lic. #00885909

Matt Orth
858-736-1337
morth@cdccommercial.com
CalBRE Lic. #01884500

11440 W. Bernardo Ct., #300
San Diego, CA 92127
T: 760-743-8500
www.cdccommercial.com

Nearby Proposed



This information is compiled from data which we believe to be correct but no liability is assumed by this company as to accuracy of such data. V3

For more information, please contact:

Nick Zech
858-232-2100
nzech@cdccommercial.com
CalBRE Lic. #01721457

Don Zech
858-486-9999
dzech@cdccommercial.com
CalBRE Lic. #00885909

Matt Orth
858-736-1337
morth@cdccommercial.com
CalBRE Lic. #01884500

11440 W. Bernardo Ct., #300
San Diego, CA 92127
T: 760-743-8500
www.cdccommercial.com

Demographics



This information is compiled from data which we believe to be correct but no liability is assumed by this company as to accuracy of such data. V3

For more information, please contact:

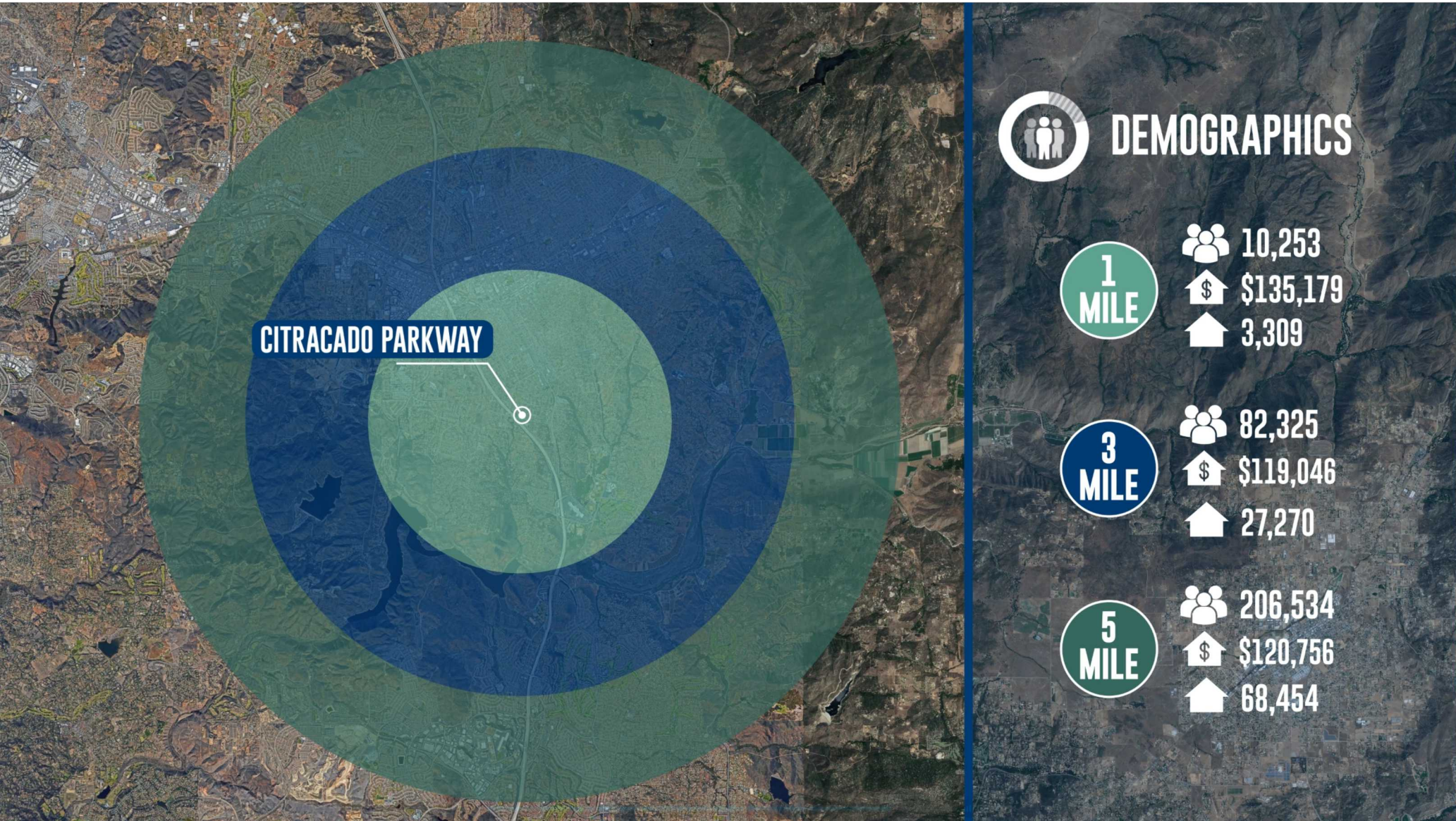
Nick Zech
858-232-2100
nzech@cdccommercial.com
CalBRE Lic. #01721457

Don Zech
858-486-9999
dzech@cdccommercial.com
CalBRE Lic. #00885909

Matt Orth
858-736-1337
morth@cdccommercial.com
CalBRE Lic. #01884500

11440 W. Bernardo Ct., #300
San Diego, CA 92127
T: 760-743-8500
www.cdccommercial.com

Demographics



This information is compiled from data which we believe to be correct but no liability is assumed by this company as to accuracy of such data. V3

For more information, please contact:

Nick Zech
858-232-2100
nzech@cdccommercial.com
CalBRE Lic. #01721457

Don Zech
858-486-9999
dzech@cdccommercial.com
CalBRE Lic. #00885909

Matt Orth
858-736-1337
morth@cdccommercial.com
CalBRE Lic. #01884500

11440 W. Bernardo Ct., #300
San Diego, CA 92127
T: 760-743-8500
www.cdccommercial.com