

# MONA LISA PLAZA

Located at the NWC of West Ina Rd. & N Mona Lisa Rd.

793 - 2,684 SF Available



For more information, please contact  
exclusive listing agents:

**David Carroll**

david@romanorealestate.com  
520.577.1000 Ext. 7114

**John Yarborough**

john@romanorealestate.com  
520.577.1000 Ext. 7117

**Romano Real Estate Corporation**

3900 E Via Palomita  
Tucson, AZ 85718  
Main 520.577.1000  
Fax 520.577.2700

[www.romanorealestate.com](http://www.romanorealestate.com)



The above information has been secured from sources we believe to be reliable, but we make no representation or warranties, expressed or implied, as to the accuracy of the information. References to square footage or age are approximate. We make no representations or warranties that the premises are free of environmental hazards or that the premises are suitable in all respects to your contemplated use. You should conduct an independent investigation of all pertinent property information. We bear no liability for any errors, inaccuracies, or omissions.

# AERIAL



**Location**

7225 N Mona Lisa Road - NWC of Ina & Mona Lisa

**Available Spaces**

Suite 100: 2,684 SF     Suite 220: 876 SF  
Suite 101: 2,075 SF  
Suite 204: 793 SF

**Traffic Count:**

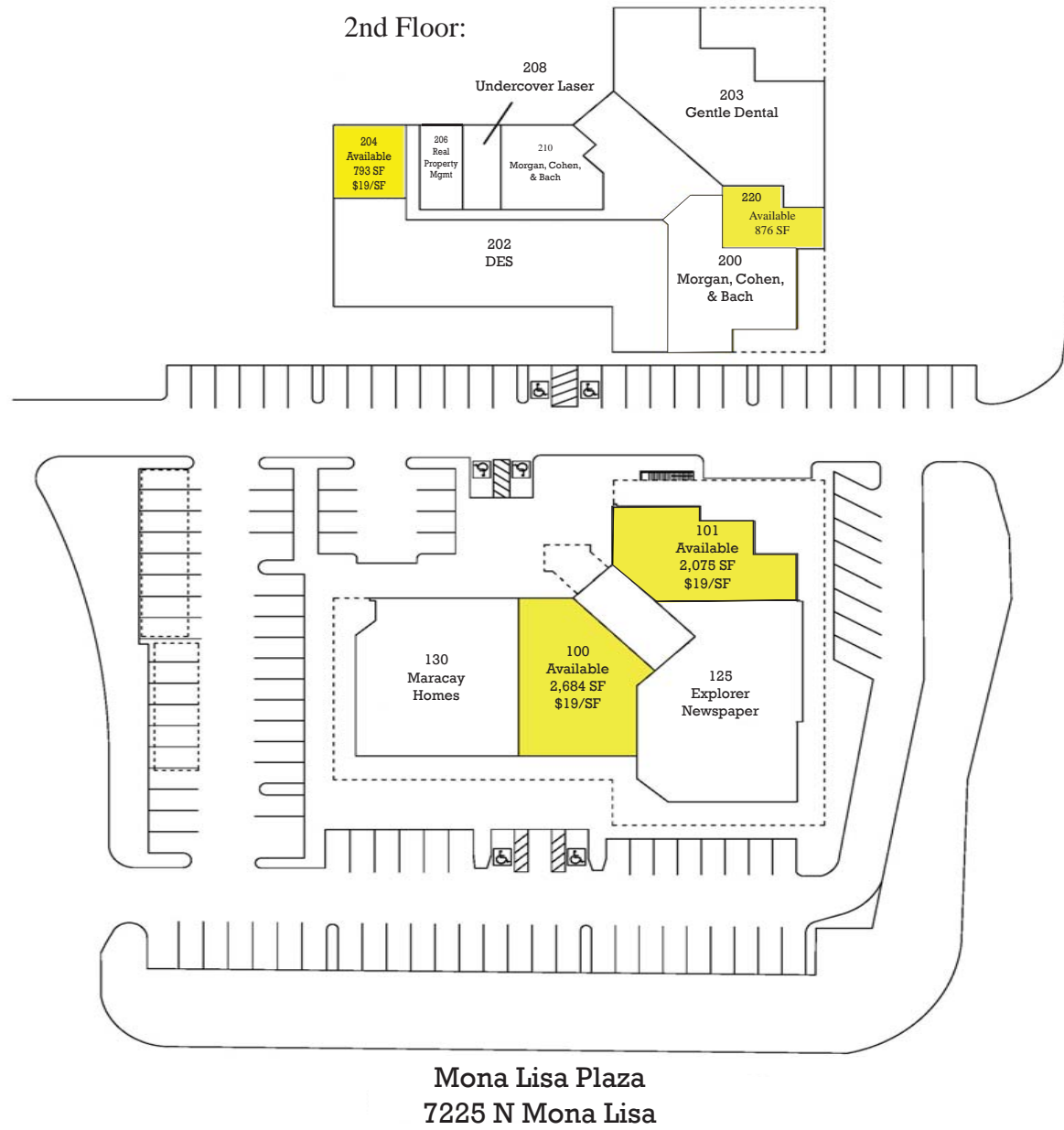
42,500 vehicles per day

**Additional Highlights:**

Located at the signalized intersection of Mona Lisa and Ina, this location is located one block west of the Foothills Mall, and just 5 minutes from I-10. Numerous common area improvements planned for 2017.

AERIAL

# Site Plan



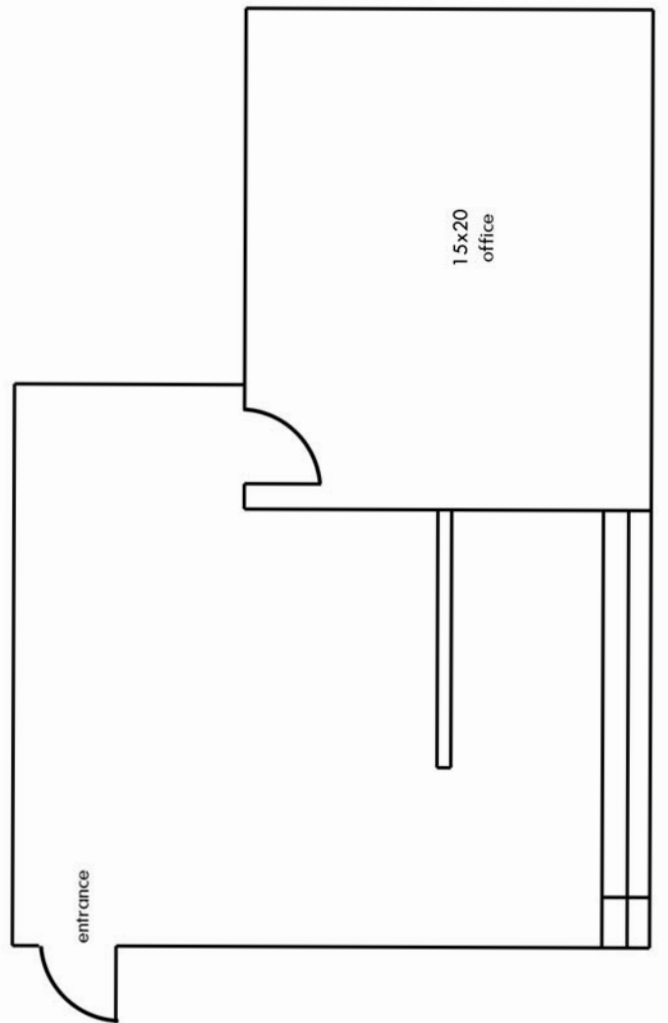
Site Plan

**Lease Rate:**

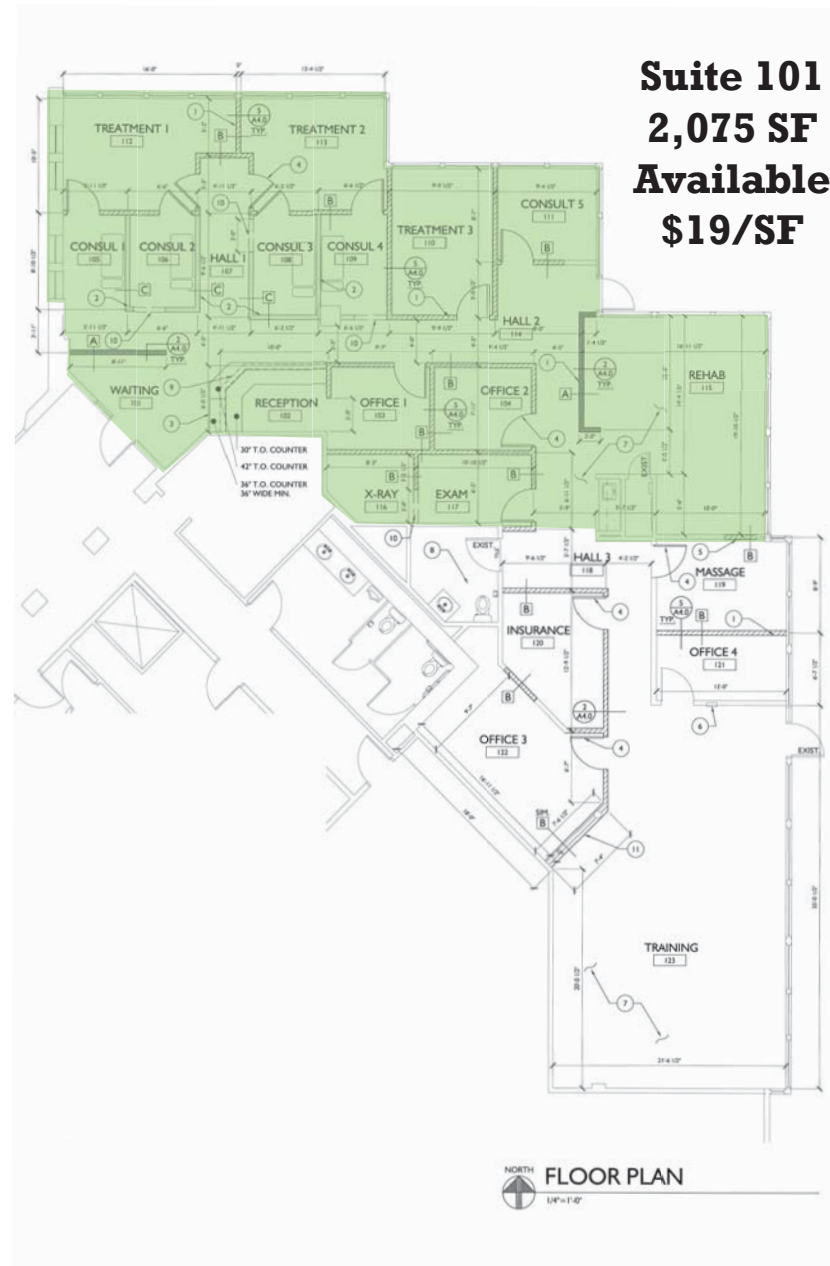
Full Service (lease rate does not include interior janitorial service and is subject to 4% annual increases and pass-throughs of operating expenses over a base year)

# Floor Plan

**Suite 220**  
**876 SF Available**  
**\$19/SF**



**Suite 101**  
**2,075 SF Available**  
**\$19/SF**

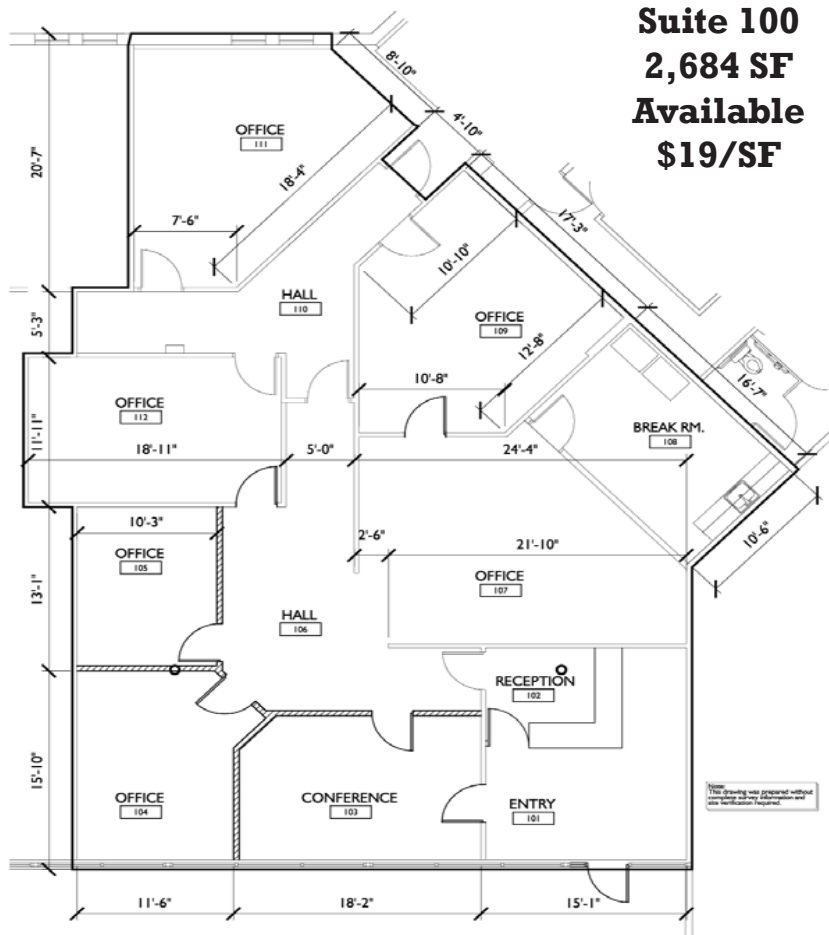


Floor Plan

**Lease Rate:**

Full Service (lease rate does not include interior janitorial service and is subject to 4% annual increases and pass-throughs of operating expenses over a base year)

# Floor Plan



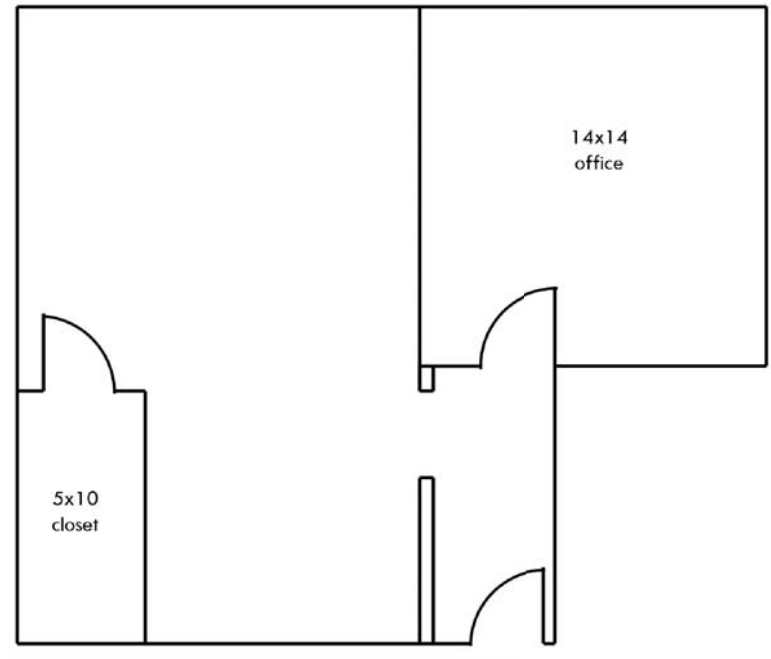
**NORTH**  
**FLOOR PLAN**  
 Scale: 1/8" = 1'-0"

Date: 01.05.10

**a.23studios**

7330 North Green Road Suite #200  
 Tulsa, Oklahoma 74124  
 580.873.2177 phone  
 580.873.2182 fax

**Suite 204**  
**793 SF**  
**Available**  
**\$19/SF**



**Floor Plan**