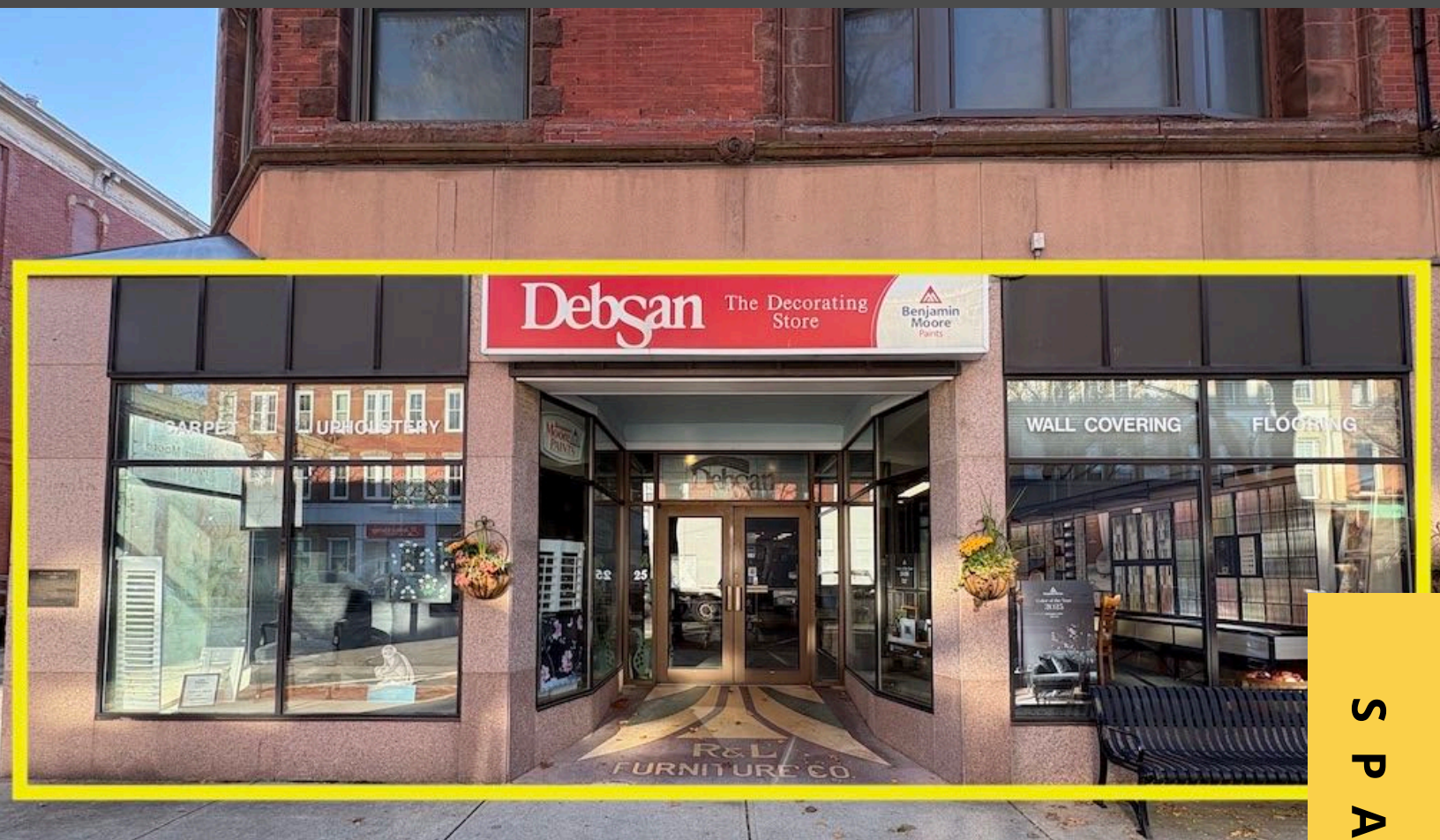


RETAIL SPACE

From 3,200 - 10,200 sf
For Lease

25 Main St & 7 Summer St
Natick, MA



S P A C E F O R L E A S E

AVAILABLE (APPROX SF):

From 3,200 sf to 10,200 sf
(Total square footage includes lower level space)

USES: Retail

FOR LEASE:

\$20/sf + NNN

NEARBY TENANTS:

Ten Trees Books, Middlesex Savings Bank, The Center for the Arts Natick (TCAN), Comella's, Buttercup, H. Brandt Jewelers, and much more!

The information contained herein has been obtained through sources deemed reliable by JMJ Commercial Realty, Inc., but cannot be guaranteed for its accuracy. We recommend to the tenant that any information, which is of special interest, should be obtained through independent verification.

LOCATION:

25 Main St & 7 Summer St is located in Natick Center, steps to the Commuter Rail and near Rt 9.

SUMMARY: Bring your creativity and business to historic Natick Center! Rarely available spacious and visible 1st floor retail space, with ability to subdivide into 3,200 sf and 7,000 sf spaces. Features lower level space and ample street parking. Highly trafficked area, walking distance to the commuter rail. Ideal for a number of retail uses, with potential for restaurant use. Call for more information.

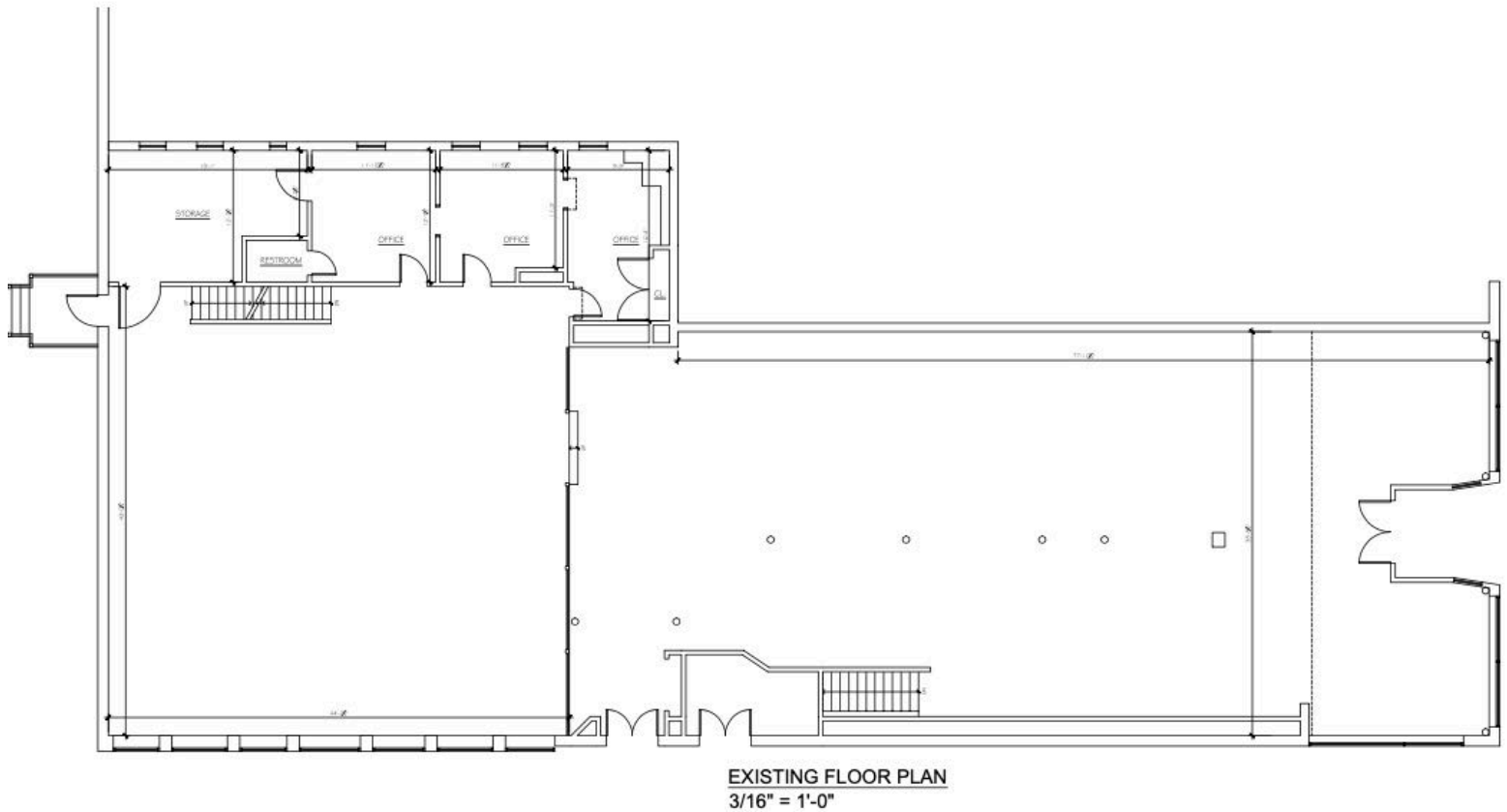


JMJ Commercial Realty
935 Great Plain Avenue #261
Needham, MA 02492
www.jmj-cre.com

Josh Seadia
Principal
617-605-5674
josh@jmj-cre.com

Retail Space for Lease - 25 Main St & 7 Summer St, Natick MA 01760

FLOOR PLAN - 1ST FLOOR



The information contained herein has been obtained through sources deemed reliable by JMJ Commercial Realty, Inc., but cannot be guaranteed for its accuracy. We recommend to the tenant that any information, which is of special interest, should be obtained through independent verification.



JMJ Commercial Realty
935 Great Plain Avenue #261
Needham, MA 02492
www.jmj-cre.com

Josh Seadia
Principal
617-605-5674
josh@jmj-cre.com