

# OFFICE SPACE FOR LEASE

16 GREENMEADOW DRIVE, TIMONIUM, MD 21093



## BUILDING INFO

36,000-square-foot building with prominent York Road visibility  
 Adjacent to the Timonium Square Shopping Center, with restaurant choices and retail amenities nearby  
 Excellent access to I-83 and 695, with York Road exposure

## AVAILABILITY

- Suite 303: 963 SF available
- Suite G111: 1,435 SF available
- Verizon Fios
- \$21.50 PSF, Full Service



### FOR MORE INFORMATION PLEASE CONTACT:

**Paul F. Obrecht, III, SIOR**  
 443-330-4802 | pfbrechtiii@blueobrecht.com

**Dixon Hopkins**  
 443-330-4810 | dhopkins@blueobrecht.com



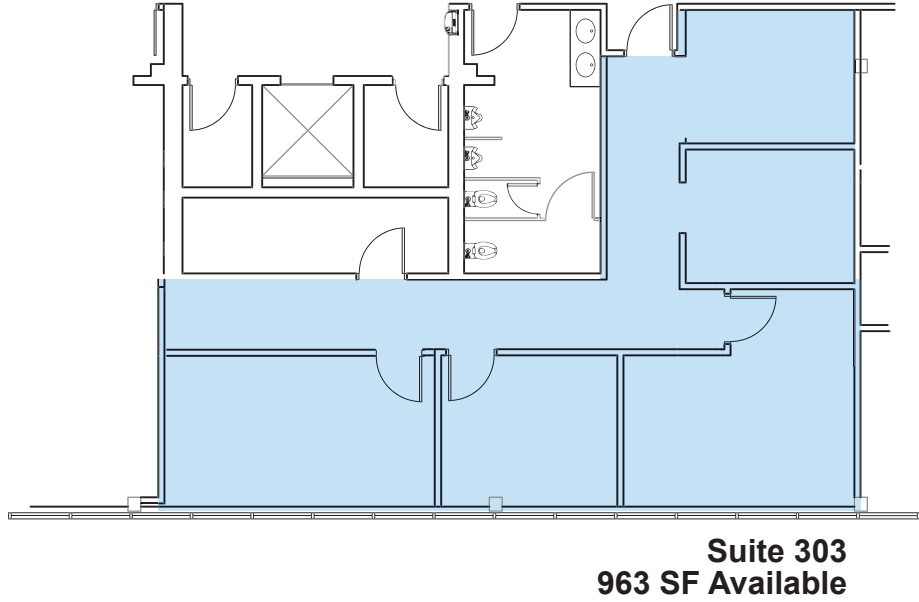
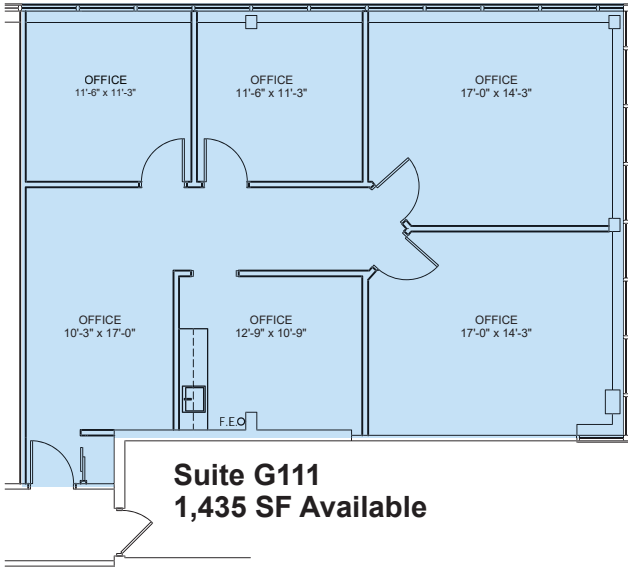
[instagram.com/blueobrecht](https://www.instagram.com/blueobrecht)

[linkedin.com/company/blue&obrecht](https://www.linkedin.com/company/blue&obrecht)

[www.blueobrecht.com](http://www.blueobrecht.com)

410-561-5568

# 16 GREENMEADOW DRIVE OFFICE SPACE FOR LEASE



## FOR MORE INFO PLEASE CONTACT:

**Paul F. Obrecht, III, SIOR**  
443-330-4802  
pfobrechti@blueobrecht.com

**Dixon Hopkins**  
443-330-4810  
dhopkins@blueobrecht.com

Blue & Obrecht Realty, LLC  
9475 Deereco Road, Suite 200  
Timonium, MD 21093



[instagram.com/blueobrecht](https://www.instagram.com/blueobrecht)



[linkedin.com/company/blue&obrecht](https://www.linkedin.com/company/blue&obrecht)



[www.blueobrecht.com](http://www.blueobrecht.com)



410-561-5568