

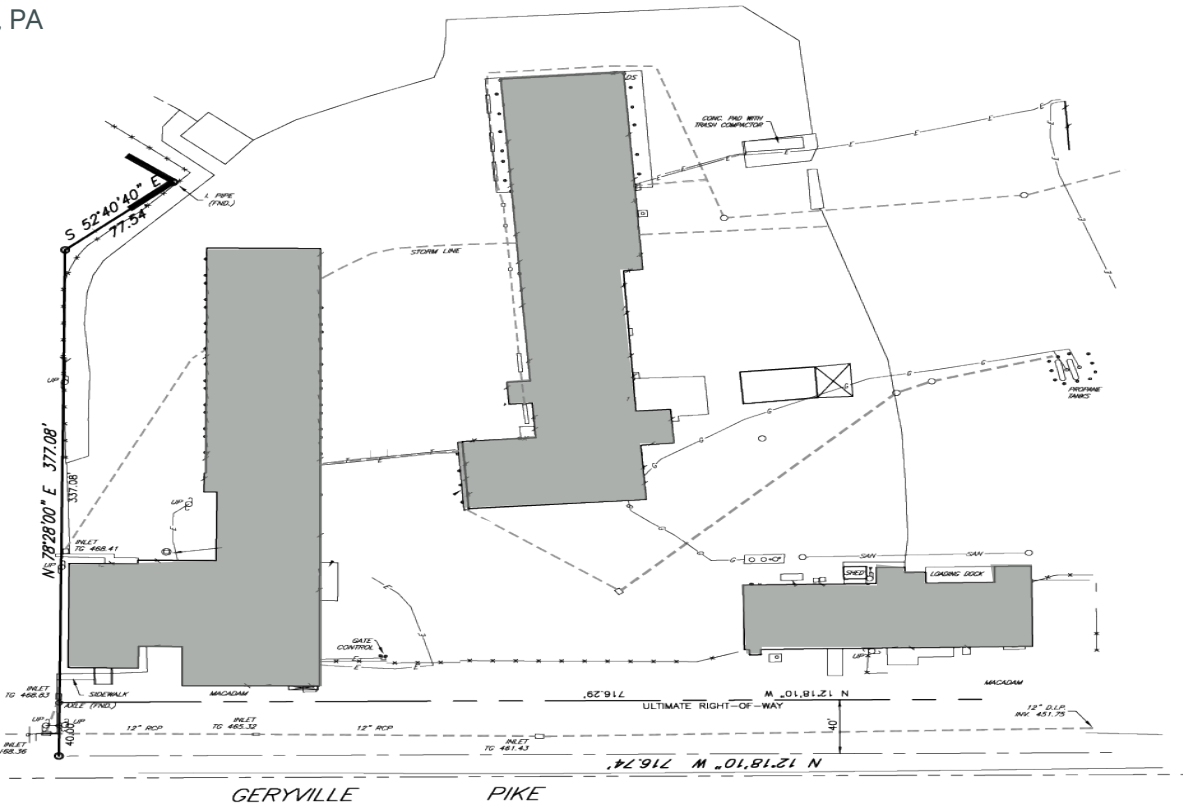
# 2703 Geryville Pike

Pennsburg, PA

Industrial Outdoor Storage & Maintenance Facility: ±56,131 SF on 11.2 Acres



**2703 Geryville Pike**  
 Pennsburg, PA



**±56,131** Square Feet

**14'-18'** Clear Height

**60'-65'** Drive Thru Bays

**±65** Estimated Trailer Parking

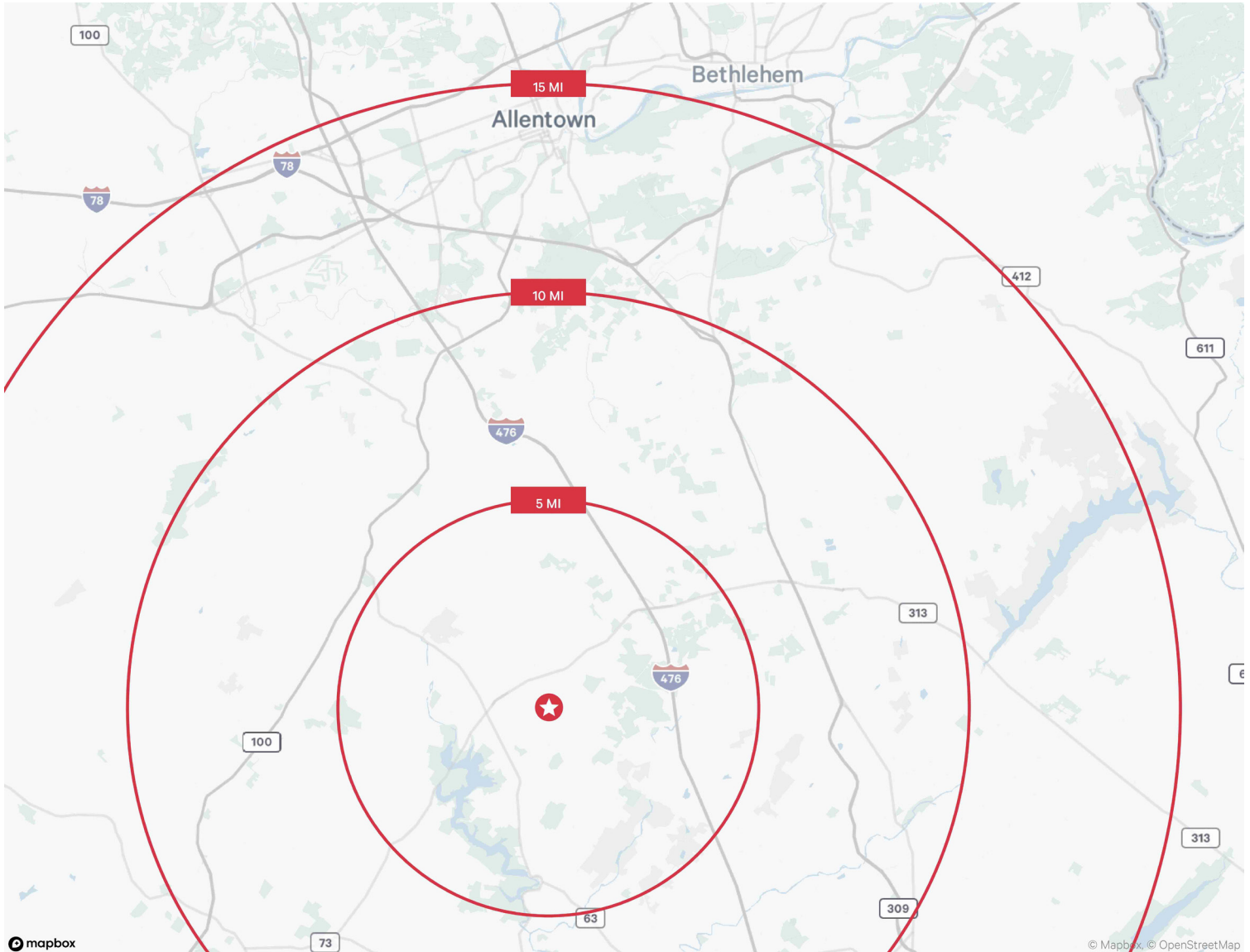
<b>Total Building SF</b>	56,131 SF	<b>Zoning</b>	OS (Outdoor Storage and Intensive Commercial/ Industrial District)
<b>Land Acres</b>	11.2 Acres	<b>Dock High Doors</b>	2 Exterior Doors
<b>Year Built</b>	1950	<b>Drive-In Doors</b>	23 Drive- In Doors
<b>Building Depth</b>	60'-65' Drive Thru Bays	<b>Electrical</b>	400 amps- three phase
<b>Clear Height</b>	14'-18' Clear Height	<b>Estimated Trailer Parking</b>	65



2703 Geryville Pike  
Pennsburg, PA

For Sale





## Contact Us

### William Wolf

Vice Chairman  
+1 610 398 7175  
bill.wolf@cbre.com  
Licensed: PA

### Max Wolf

First Vice President  
+1 610 301 2550  
max.wolf@cbre.com  
Licensed: PA

### CBRE, Inc.

1275 Glenlivet Drive,  
Suite 320,  
Allentown, PA 18106  
+1 610 398 6900  
Licensed Real Estate Broker

© 2024 CBRE, Inc. All rights reserved. This information has been obtained from sources believed reliable, but has not been verified for accuracy or completeness. You should conduct a careful, independent investigation of the property and verify all information. Any reliance on this information is solely at your own risk. CBRE and the CBRE logo are service marks of CBRE, Inc. All other marks displayed on this document are the property of their respective owners, and the use of such logos does not imply any affiliation with or endorsement of CBRE. Photos herein are the property of their respective owners. Use of these images without the express written consent of the owner is prohibited.