

FOR LEASE

6641 SE Johnson Creek Blvd, Portland, Clackamas County, 97206

Rare Vacancy at the Crosswhite Industrial Park!



No Multnomah County Taxes!

\$2,000 PER MONTH PLUS NNN

- +/-1,440 Sq. Ft. Shell of which +/-500 Sq. Ft. is Office.
 - One Grade-Level Loading Door.
- Ten (+/-10') Foot Tall Ceilings in Warehouse.
 - Bonus Mezzanine Storage.
 - 2 Bathrooms.
 - 3-Phase Power.

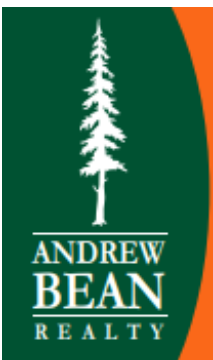
Andrew Bean, SIOR

503-819-5381

andrew@andrewbeanrealty.com

PO Box 10104

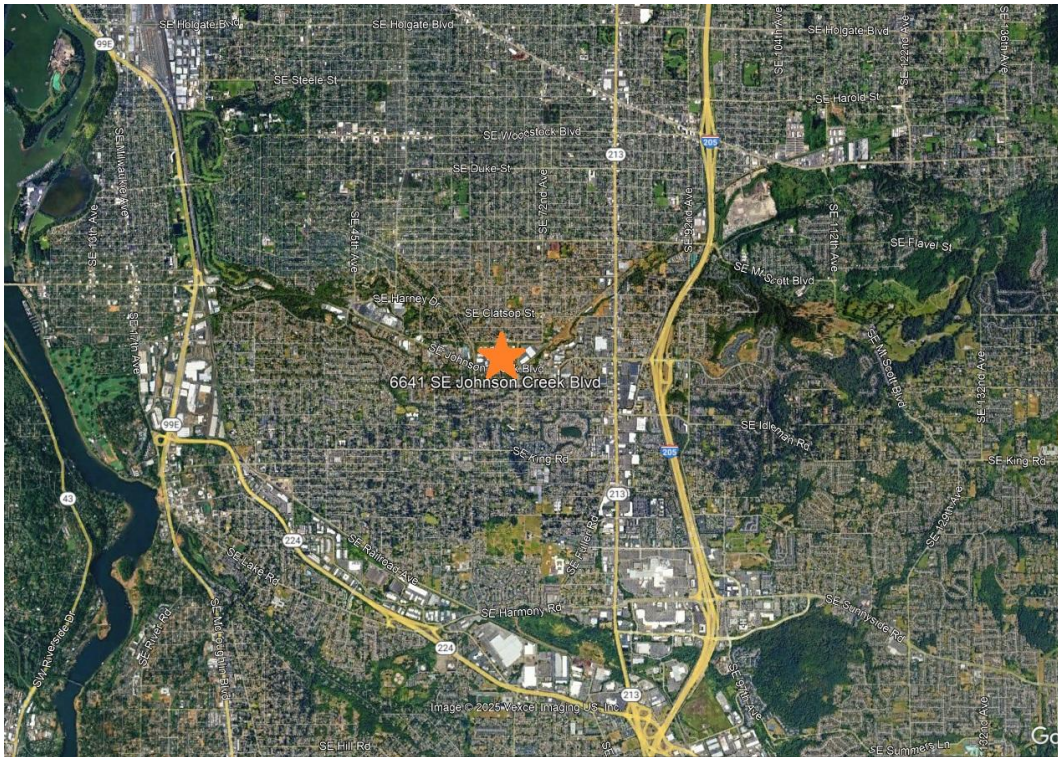
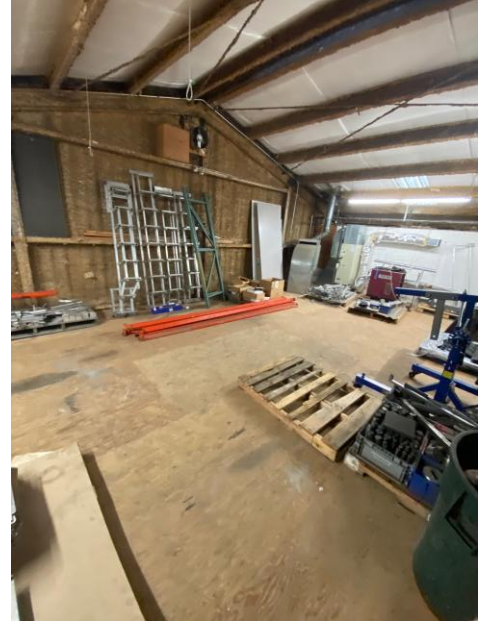
Portland, Oregon 97296



This information has been obtained by others and deemed to be reliable. However, a prospective purchaser or lessee is expected to verify all information to their own satisfaction.

FOR LEASE

6641 SE Johnson Creek Blvd, Portland, Clackamas County, 97206



Andrew Bean, SIOR

503-819-5381

andrew@andrewbeanrealty.com

This information has been obtained by others and deemed to be reliable. However, a prospective purchaser or lessee is expected to verify all information to their own satisfaction.