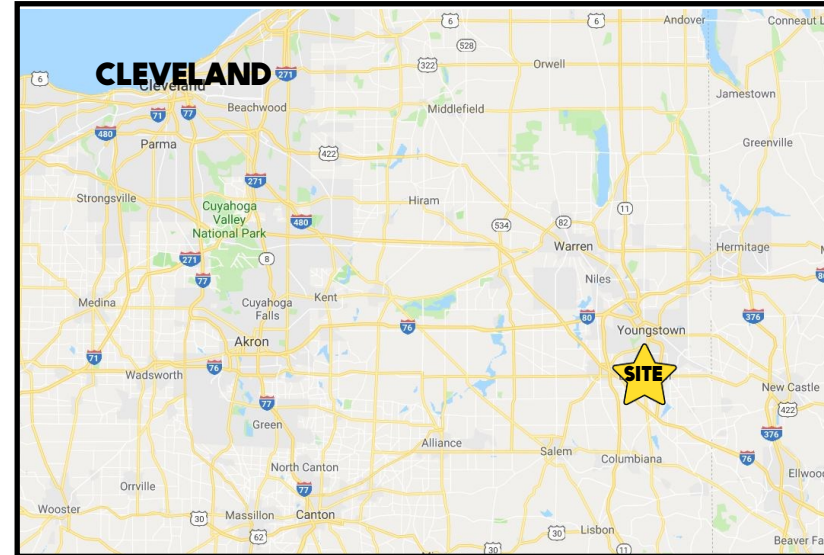


LOCATION

755 Boardman Canfield Rd, Boardman, OH 44512



HIGHLIGHTS

- Professional office / medical spaces
- Plenty of natural light
- Professional setting in Southbridge Executive Park
- Ample parking
- Convenient location by West Blvd

TRAFFIC

Boardman Canfield Rd = 34,327 VPD

CONTACT

ADAM DIVEBISS

501.551.3817

adivebiss@platzrealtygroup.com

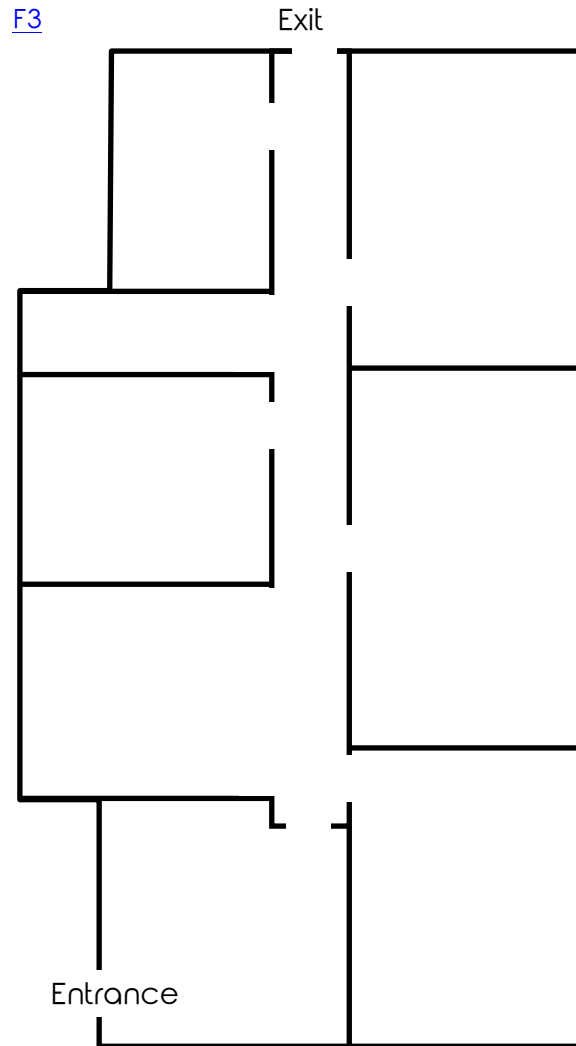
MATT WILSON

330.347.9677

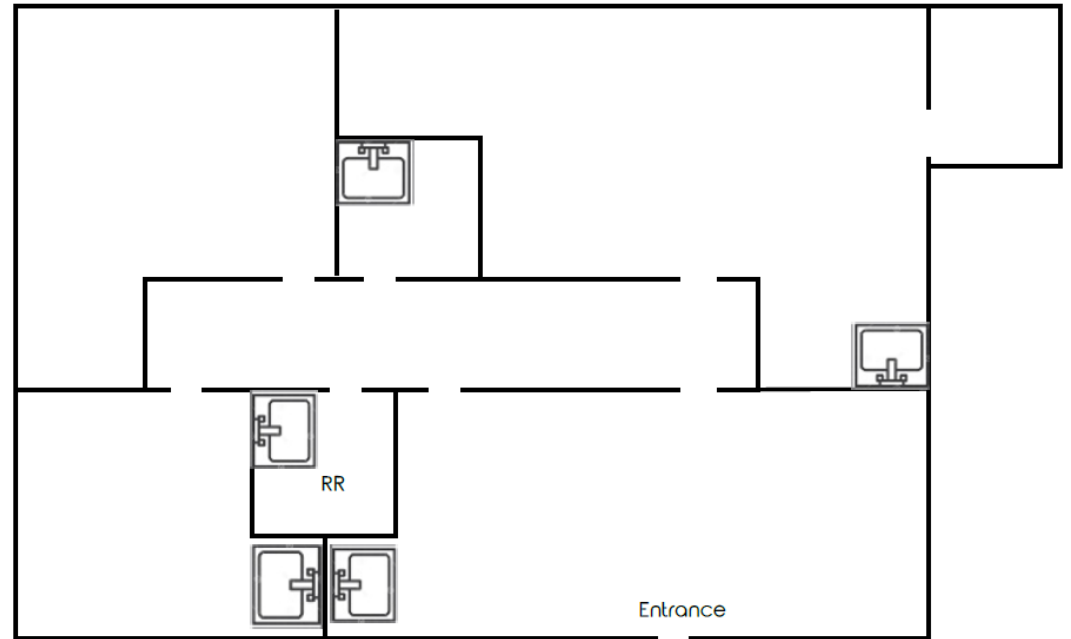
mwilson@platzrealtygroup.com

Office: 330.757.4889 | Fax: 330.294.5622 | 3830 Starr Centre Dr, Suite 2, Canfield, OH 44406

www.PLATZREALTYGROUP.com



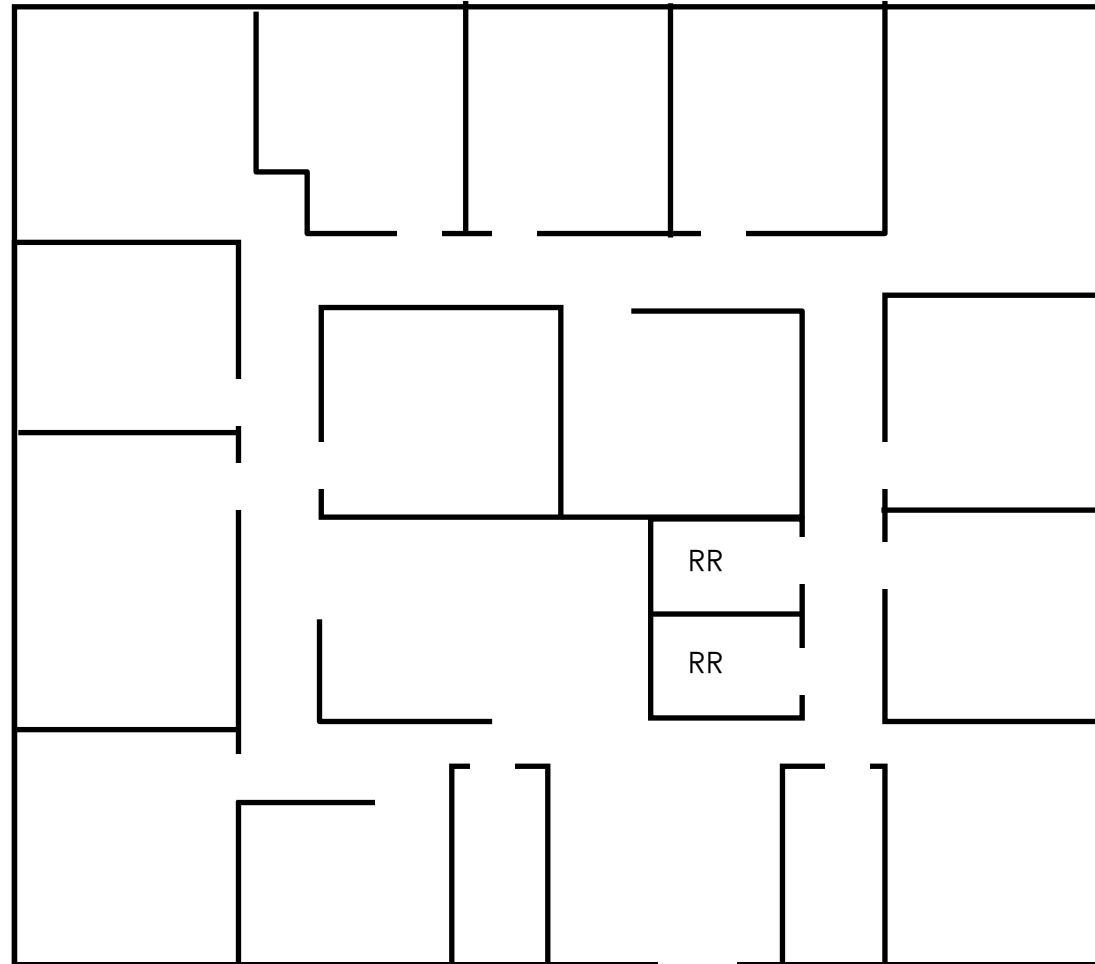
F9



Office: 330.757.4889 | Fax: 330.294.5622 | 3830 Starr Centre Dr, Suite 2, Canfield, OH 44406

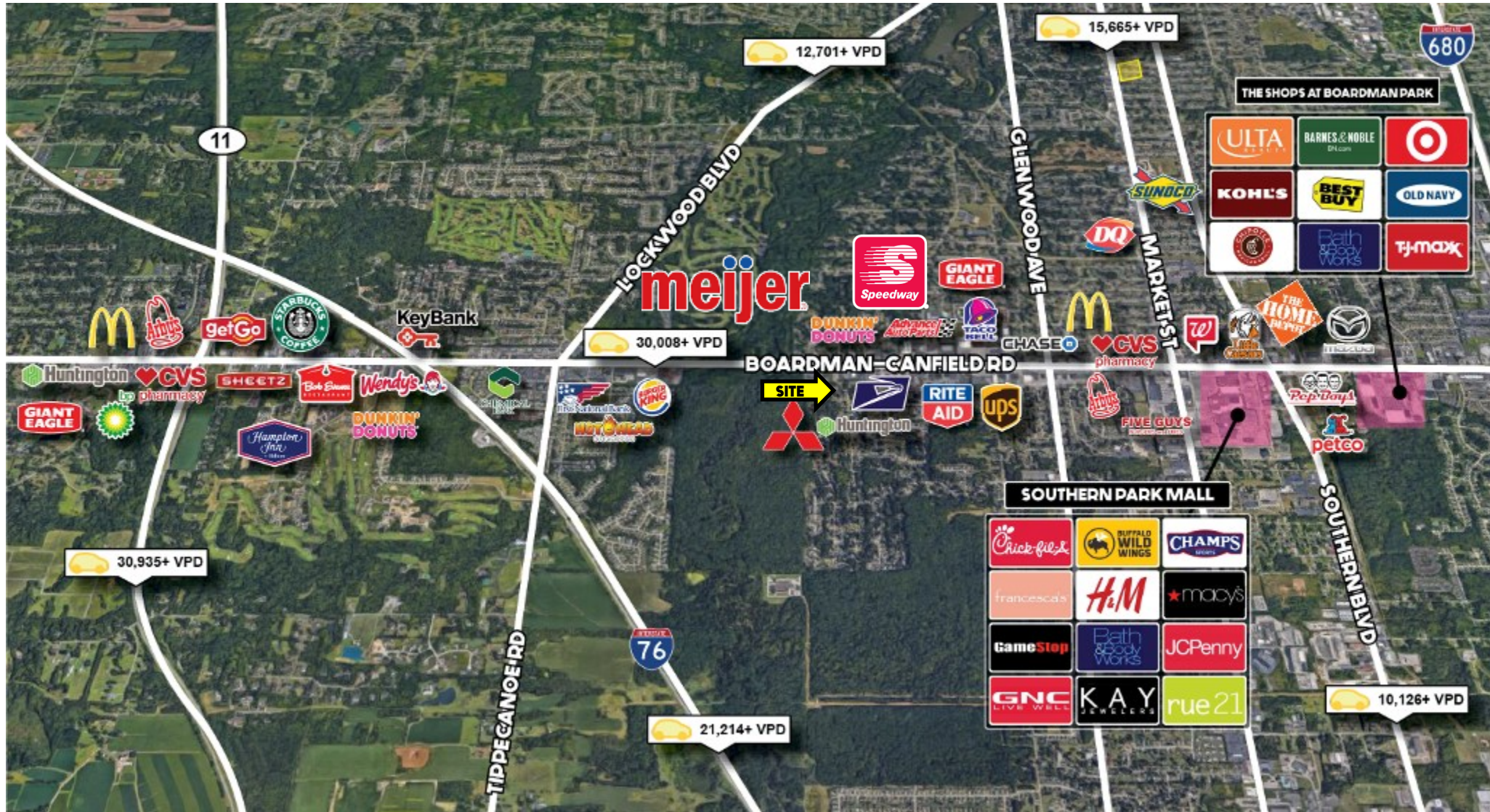
www.PLATZREALTYGROUP.com

F6/7: [3D Tour](#)



Office: 330.757.4889 | Fax: 330.294.5622 | 3830 Starr Centre Dr, Suite 2, Canfield, OH 44406

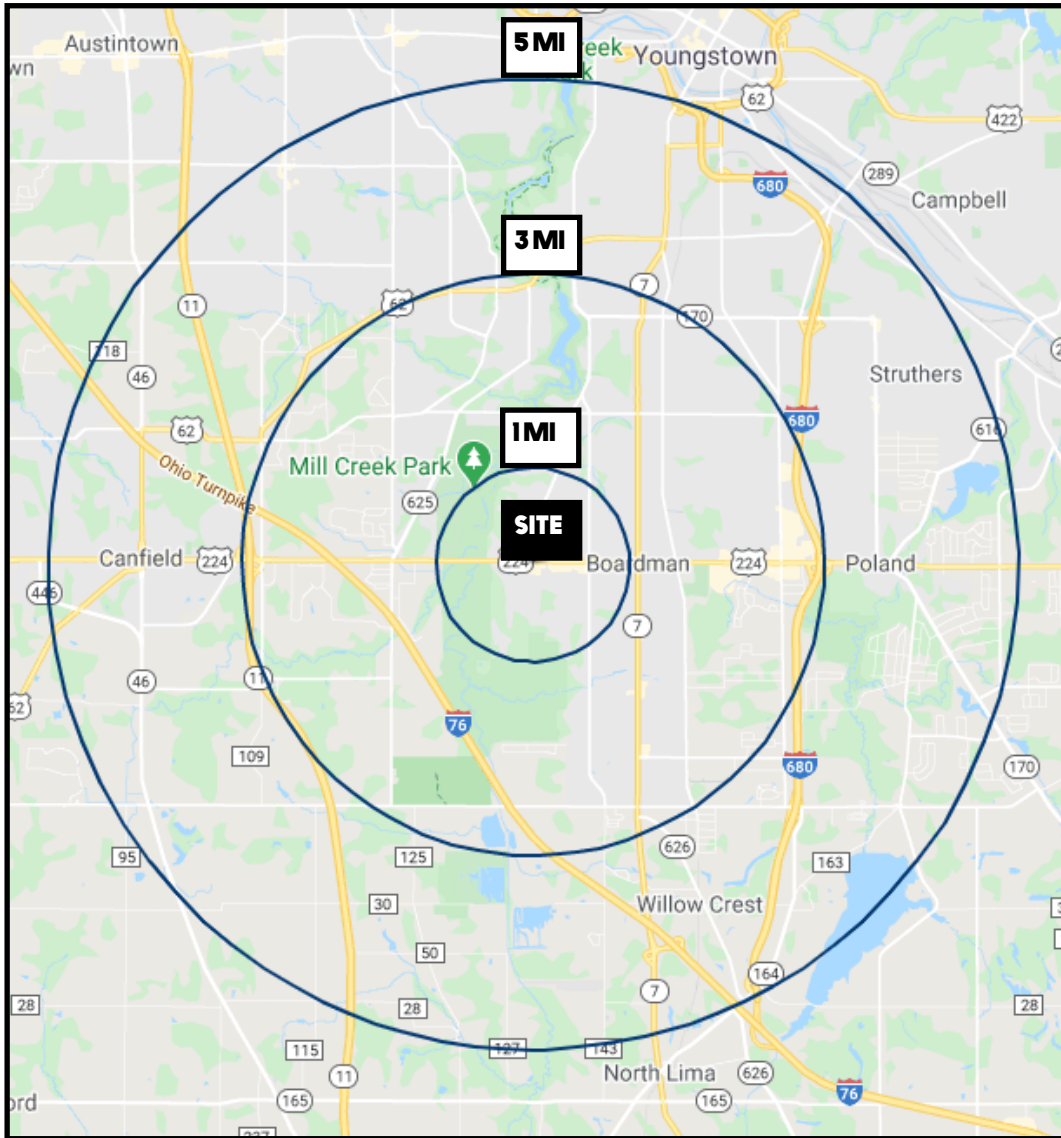
www.PLATZREALTYGROUP.com



Office: 330.757.4889 | Fax: 330.294.5622 | 3830 Starr Centre Dr, Suite 2, Canfield, OH 44406

www.PLATZREALTYGROUP.com

The information presented was obtained from sources believed to be true and reliable. The Platz Realty Group makes no warranties or guarantees to the accuracy of the information.



DEMOGRAPHICS	1 MI	3 MI	5 MI
POPULATION	6,648	46,146	116,056
HOUSEHOLDS	3,047	20,087	49,428
MEDIAN AGE	45	44	44
AVERAGE HH INCOME	\$75,357	\$77,128	\$69,124

SITE INFORMATION

LOCATION	Boardman Township Mahoning County
PROPERTY TYPE	Office
AVAILABLE	F3: 1,270 SF; \$12.50/SF F6+F7: 3,192 SF; \$1,500/month As Is F9: 755 SF \$12.00/SF
YEAR BUILT	1989
PARKING	Ample shared parking
SIGNAGE	Building and door
RENT	See Above Gross rent + utilities

Office: 330.757.4889 | Fax: 330.294.5622 | 3830 Starr Centre Dr, Suite 2, Canfield, OH 44406